

Proposed ADRA Residential Development, Land at Llanberis Road, Caernarfon

Transport Statement

Prepared for: Datrys

240824

MAY 2025



SCP GENERAL NOTES

Project No.: 240824-TS (01)

Title: Land at Llanberis Road, Caernarfon, Transport Statement

Client: Prepared for: Datrys

Date: 19 May 2025

Office: Manchester

Author	<u>Orla Proffitt</u>	Reviewer	<u>Peter Todd</u>
---------------	----------------------	-----------------	-------------------

Revision	Date	Status	Prepared by	Approved by
0	23.09.2024	Issue	OP	PT
1	15.10.2024	Issue	OP	PT
2	19.05.2025	Issue	OP	PT

SCP (an RSK company) has prepared this report for the sole use of the client, showing reasonable skill and care, for the intended purposes as stated in the agreement under which this work was completed. The report may not be relied upon by any other party without the express agreement of the client and SCP. No other warranty, expressed or implied, is made as to the professional advice included in this report.

Where any data supplied by the client or from other sources have been used, it has been assumed that the information is correct. No responsibility can be accepted by SCP for inaccuracies in the data supplied by any other party. The conclusions and recommendations in this report are based on the assumption that all relevant information has been supplied by those bodies from whom it was requested.

No part of this report may be copied or duplicated without the express permission of SCP and the party for whom it was prepared.

Where field investigations have been carried out, these have been restricted to a level of detail required to achieve the stated objectives of the work.

This work has been undertaken in accordance with the quality management system of SCP.

Prepared for: Datrys

Land at Llanberis Road, Caernarfon, Transport Statement

240824-TS (01)

CONTENTS

1	INTRODUCTION	1
	General	1
	Purpose and Structure of Report	1
2	EXISTING CONDITIONS	3
	General	3
	Site Location and Composition	3
	Local Highway Network	5
	Road Safety	5
3	PROPOSED DEVELOPMENT	7
	Overview	7
	Proposed Access Arrangements	7
	Servicing	8
	Parking	8
4	ACCESSIBILITY	9
	General	9
	Access on Foot	9
	Access by Cycle	10
	Access by Public Transport	13
5	ANTICIPATED TRANSPORT IMPACTS	15
	Overview	15
	Trip Generation	15
6	SUMMARY AND CONCLUSIONS	17

APPENDIX A – SPEED SURVEY RESULTS

APPENDIX B – SITE LAYOUT PLAN

APPENDIX C – VISIBILITY SPLAYS AND ACCESS ARRANGEMENTS

APPENDIX D – SWEEPED PATH ANALYSIS

APPENDIX E – TRICS DATA

1 INTRODUCTION

General

1.1 SCP have been instructed by Datrys to provide transport planning and highways advice in relation to a proposed residential development, comprising 36 dwellings, on land located to the southeast of the A4086 Llanberis Road, Caernarfon.

1.2 The application was subject to a pre-application enquiry (reference Y23/0562) with Gwynedd Council providing comments in a letter dated 5th September 2023. The Council's Transportation Unit was consulted and provided the following comments:-

The proposed site entrance is located within a 40mph zone therefore the required visibility splay would be 2.4m x 120m. If 120m cannot be provided, the applicant would be required to determine what visibility splay can be achieved, obtain traffic data via surveys, and demonstrate that a relaxation to the standard would be justifiable in this instance.

The parking requirements for the development would be as follows:

- 1 bedroom units - 1 parking space within curtilage;
- 2/3 bedroom units - 2 parking spaces within curtilage;
- 4 bedroom units - 3 parking spaces within curtilage
- Visitor parking – 1 space per 5 units

1.3 In addition to the above, concerns were raised in relation to the existing tree along the sites frontage which is protected by a tree preservation order and how this would impact on the achievable levels of visibility, which is discussed later in this report.

Purpose and Structure of Report

1.4 This Transport Statement (TS) has been produced to accompany the planning application and provides an assessment of the traffic and transport implications associated with the development proposals to inform Gwynedd Council, as local highway and planning authority, of the nature and magnitude of likely highways and transportation impacts of the proposal.

1.5 The structure of the report is summarised below:-

- Chapter 2 – describes in detail the site location and composition, local transport network and road safety record;

- Chapter 3 – defines the development proposals including the proposed access, servicing and car parking arrangements;
- Chapter 4 – considers the location of the site with regard to the existing local sustainable transport infrastructure;
- Chapter 5 – presents estimates of the trip generating potential of the proposed use of the site, along with a summary of impact of the development on the local network; and
- Chapter 6 – provides the summary and conclusions to the above chapters.

2 EXISTING CONDITIONS

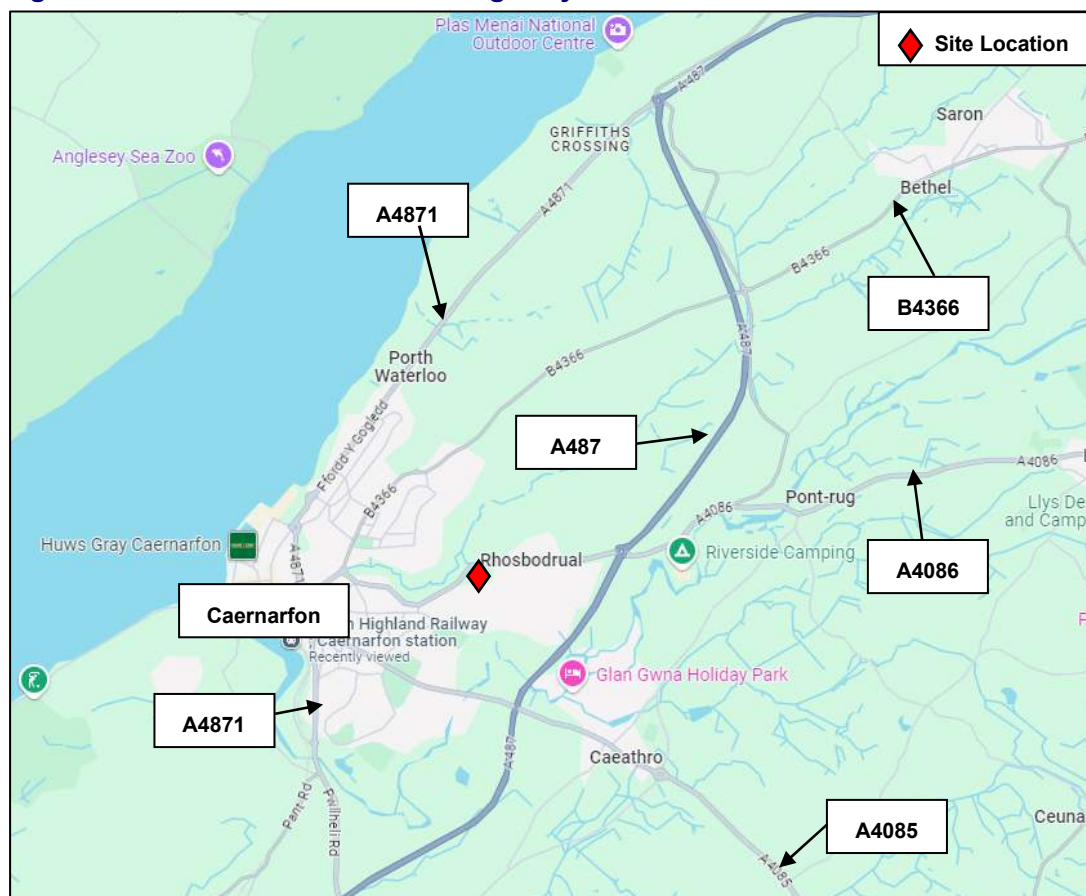
General

- 2.1 This Chapter provides a detailed description of the location of the site and composition, local highway network and road safety record.

Site Location and Composition

- 2.2 The application site comprises undeveloped land and is located southeast of Llanberis Road, Caernarfon, approximately 1 mile east of Caernarfon town centre.
- 2.3 The location of the site in relation to the wider highway network is shown on **Figure 2.1** below.

Figure 2.1 – Site Location – Wider Highway Network



- 2.4 The location of the site in relation to the local highway network is shown on **Figure 2.2** below.

Local Highway Network

- 2.6 The A4086 Llanberis Road fronts the western site boundary and provides a local connection to Caernarfon town centre in the west and the A487 Caernarfon bypass in the east. In the immediate vicinity of the site, the A4086 Llanberis Road is subject to a 40mph speed limit and benefits from street lighting and a footway on the northwestern side of the road. The speed limit changes from 40mph to 20mph approximately 140m to the southeast of the site, with terminal speed limit signs and buff coloured backing roundel road markings.
- 2.7 Bus stops are located on the A4086 Llanberis Road approximately 45m from the southern boundary of the site.
- 2.8 Gwynedd Council have proposals for a new active travel link which runs between Caernarfon and Llanrug. In the vicinity of the site the route will run along the northern side of the A4086 Llanberis Road providing a connection between Cbyn Industrial Estate in the north and the A4871 roundabout in the southwest. This route comprises a shared footway / cycle route which is achieved through widening of existing footways, along with the introduction of new crossing points. This will provide a significant benefit to active travel in the local area and the development site.

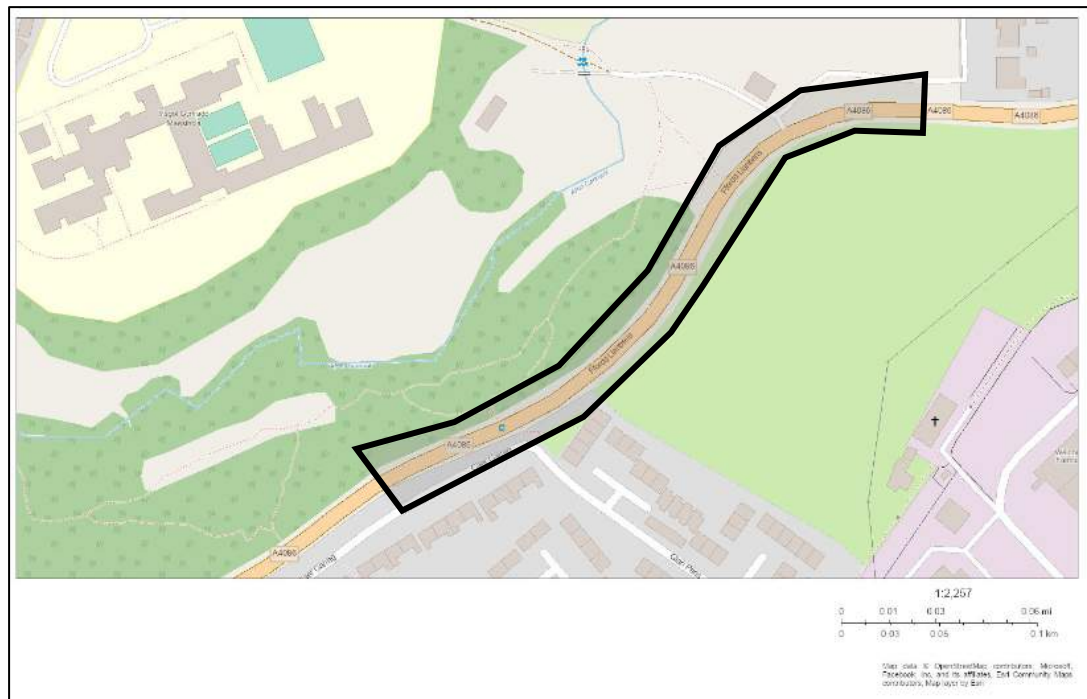
Speed Survey

- 2.9 In order to determine the existing traffic speeds on the A4086 Llanberis Road and inform the required visibility splays at the site access, an Automatic Traffic Count (ATC) survey was undertaken to the east of the proposed site access, at the location requested by the highway officer. The surveys were undertaken from 5th September 2024 to 11th September 2024, with the recorded 7 day average 85th percentile speed on the approach to the site access being 40.2mph. The speed survey data is presented in [Appendix A](#).

Road Safety

- 2.10 In order to identify any critical locations on the network with a poor accident record, a review of accident data has been undertaken using the Department for Transport (DfT) data, for the most recently available 5-year period ending 31st December 2022 as shown on [Figure 2.4](#) below.

Figure 2.4 – Road Safety Record



- 2.11 **Figure 2.4** shows that there have been no accidents recorded on the A4080 Llanberis Road in the vicinity of the site over the five-year study period.
- 2.12 Having regard to the above analysis, where no accidents have been recorded in the vicinity of the site over the five-year study period, the existing accident record does not represent a material concern in the context of the proposed development.

3 PROPOSED DEVELOPMENT

Overview

- 3.1 The development proposals are for a residential development, comprising 36 dwellings, on land located east of the A4080, Llanberis Road.
- 3.2 The site layout plans are presented in **Appendix B** and the full schedule of accommodation is listed below;
- 10 no.1 bedroom apartments
 - 3 no. 2 bedroom bungalows
 - 13 no. 2 bedroom houses
 - 7 no. 3 bedroom houses
 - 2 no. 4 bedroom houses
 - 1 no. 5 bedroom house

Proposed Access Arrangements

- 3.3 Vehicular access to the site will be provided from a new access from the A4080 Llanberis Road, as shown on Drawing SCP/240824/D01/A presented in **Appendix C**. The access has been designed with typical geometries for residential development, with a 5.5m wide carriageway, 2m wide footways on both side of the carriageway and 6m junction radii.
- 3.4 As detailed earlier, the recorded 85th percentile traffic speeds on the westbound approach to the access is 40.2mph. Based on guidance presented in Technical Advice Note:18 Wales, these speeds result in a required visibility splay of 102m to the east, which is achievable when measured 1m into the carriageway without impacting on the protected tree. In addition, a 2.4m x 120m visibility splay is achievable to the west, which complies with the 40mph speed limit of the road. The achievable visibility splays are shown on Drawing SCP/240824/D01/A presented in **Appendix C**.
- 3.5 The proposed development will provide a 2m wide footway along the sites frontage, with pedestrian and cycle access being provided at the location of the vehicular access. A separate pedestrian access is also proposed to the south of the site which connects onto the existing footway through the residential development to the south and provides a link to the bus stop.

Servicing

- 3.6 The internal site layout has been designed to accommodate the movements of a refuse vehicle. Drawing number SCP/240824/ATR01/A, presented in [Appendix D](#), shows the swept path analysis of this vehicle and demonstrates that it can turn within the site and exit in a forward gear.

Parking

- 3.7 As shown on the site layout plan in [Appendix B](#), the proposed development provides a total of 74 car parking spaces, which is in accordance with the Council's requested parking provision in the pre-application response.
- 3.8 The proposed number of parking spaces for each dwelling is set out below:
- 1 bedroom dwellings – 1 car parking space
 - 2 and 3 bedroom dwellings – 2 car parking spaces
 - 4 bedroom dwellings – 3 car parking spaces
 - 5 bedroom dwelling – 4 car parking spaces
 - Visitor parking spaces – 8 car parking spaces
- 3.9 Whilst it is acknowledged that the parking provision for visitor spaces falls below the Wales Parking Standards (2014), the proposed provision is considered sufficient and acceptable for the following reasons;
- The site benefits from good levels of accessibility, being within walking distance of large residential areas, Caernarfon town centre and Caernarfon bus station, where a number of bus services can be accessed;
 - The general thrust of National and Local planning policy is to reduce car borne trips and encourage travel by sustainable modes such as public transport, walking and cycling. In particular, policy advocates locating developments where there is high quality infrastructure and sustainable transport modes can be maximised. As detailed later, the proposed development is accessible, and the reduced level of visitor parking will help to encourage travel by sustainable modes;
- 3.10 Based on the above, the car parking provision for the proposed development is considered appropriate.

4 ACCESSIBILITY

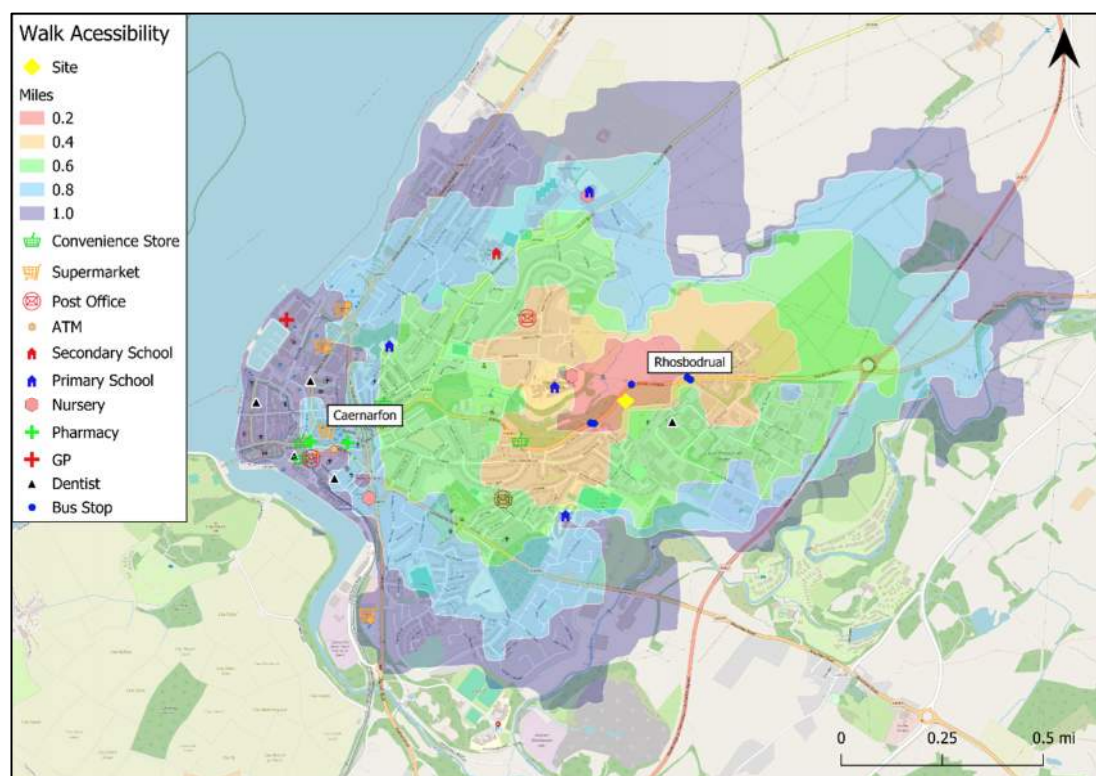
General

- 4.1 This Chapter presents a review of the accessibility of the site by walking, cycling and public transport modes.

Access on Foot

- 4.2 Reference has been made to the Walking and Cycling Strategy for Wales, dated December 2003, which indicates that the practical distance for journeys on foot are up to 1 mile. Industry standard GIS TRACC software has been used to assess the accessibility of the development by foot for a 1 mile walk distance from the site, as shown on **Figure 4.1** below.

Figure 4.1 – Walking Accessibility 1 Mile Isochrone



- 4.3 The above demonstrates that the site is within an acceptable walking distance of Caernarfon town centre and the wide range local facilities the town has to offer, a selection of which can be seen below in **Table 4.1**.

Table 4.1 – Local Facilities Table

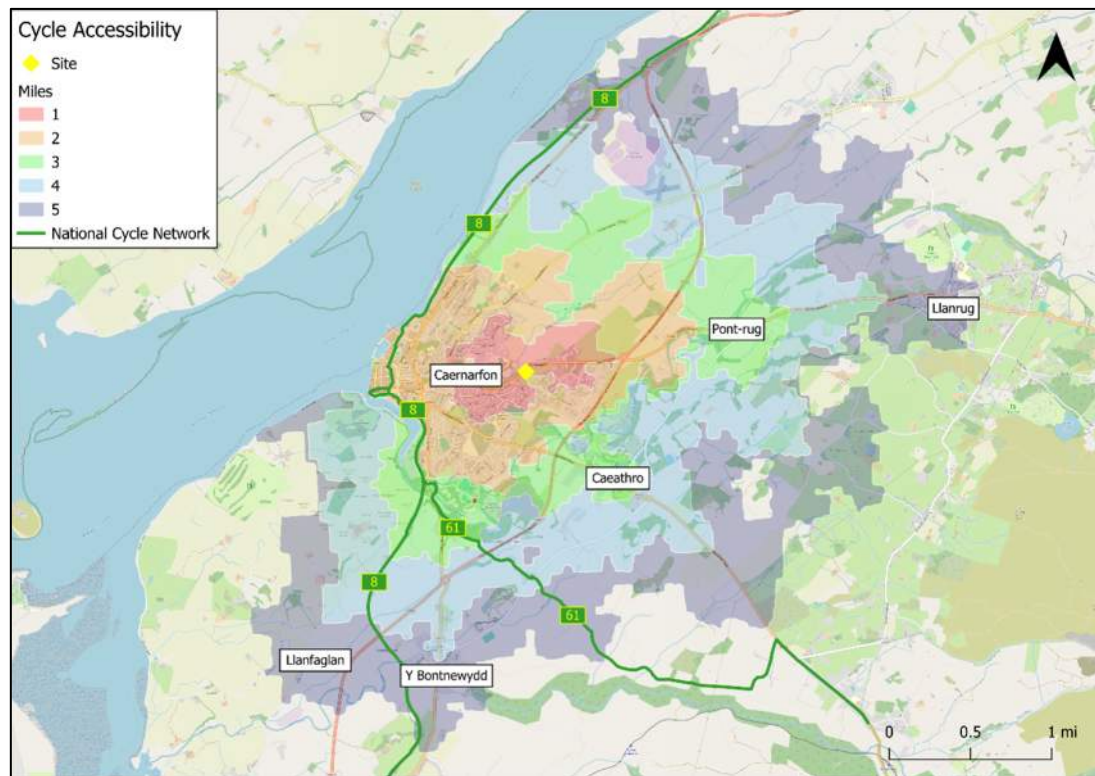
Facility	Details	Distance from Site
Bus Stop	Llanberis Road (WB)	213 ft
Bus Stop	Llanberis Road (EB)	262 ft
Convenience Store	Spar, Min Y Nant, Llanberis Road	0.3 miles
Primary School	Ysgol Gynradd Maesincla	0.4 miles
Primary School	Ysgol Yr Hendre, Ffordd Cae Phillips	0.5 miles
Public House	Twthill Vaults, Thomas Street	0.7 miles
Nursery	Babinogion Day Nursery, Cae Llenor, Wellington Terrace	0.7 miles
Primary School	Ysgol Santes Helen	0.7 miles
Secondary School	Ysgol Syr Hugh Owen, Bethel Road	0.8 miles
Pharmacy	Boots Pharmacy, Pool Lane And	0.8 miles
Supermarket	Iceland, Bridge Street	0.8 miles
Bus Station	Caernarfon Bus Station, Pool Hill	0.8 miles
Supermarket	Morrisons, Ffordd Y Gogledd	0.9 miles
Post Office	Caernarfon Post Office, Castle Square	0.9 miles
Dentist	Castle Square Clinic Limited, Castle Square	0.9 miles
ATM	ATM - HSBC, Castle Square	0.9 miles
GP Surgery	Hafan Iechyd, Doc Fictoria	1 mile

- 4.4 Overall, the site benefits from relatively good levels of accessibility by foot, with Caernarfon town centre only a short walk from the site, allowing walking to be a viable alternative to private car use for prospective residents.

Access by Cycle

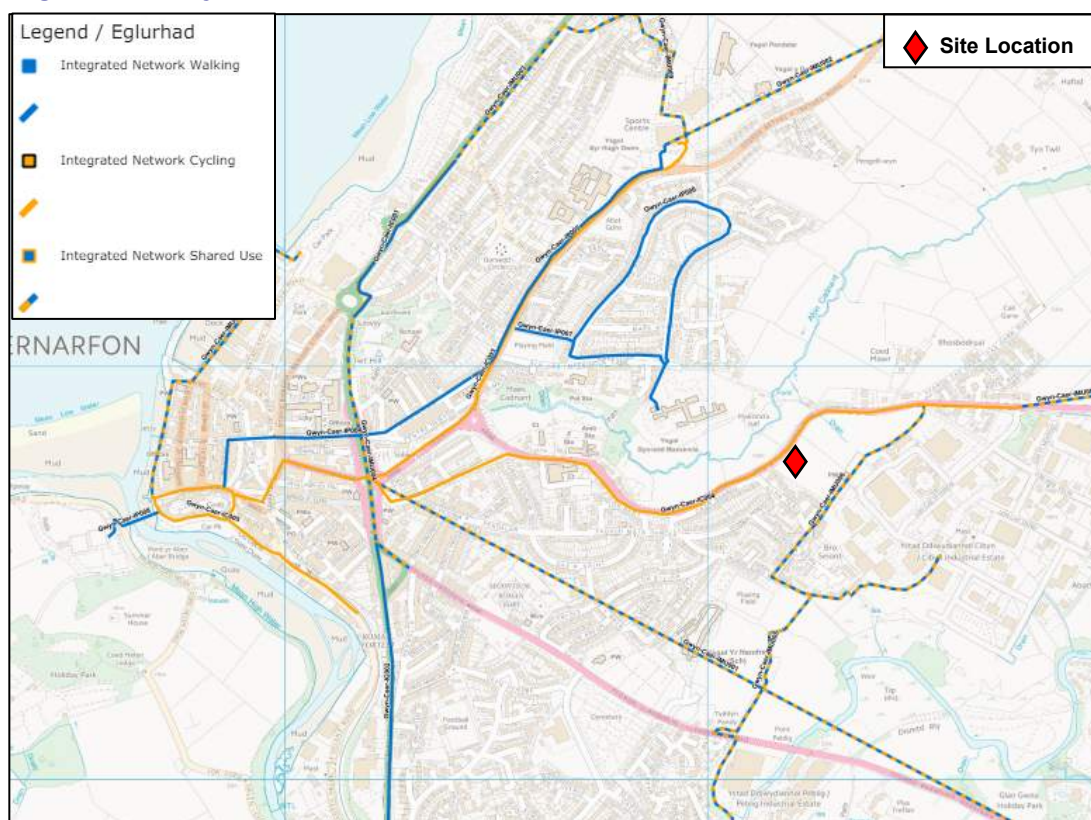
- 4.5 The Walking and Cycling Strategy for Wales identifies that “*Cycling can offer viable and attractive alternatives*” for short trips and as a substitute for shorted car journeys.
- 4.6 GIS TRACC software has again been used to assess the accessibility of the site by bicycle, for a 5 mile cycle distance and is shown on **Figure 4.2** below.

Figure 4.2 – Cycle Accessibility 5km Isochrone



- 4.7 **Figure 4.2** demonstrates that the nearby areas of Caernarfon, Llanfaglan, Y Bontnewydd, Caeathro, Pont-rug and Llanrug, amongst others, are all located within the 5 mile catchment area from the development site.
- 4.8 In addition to the above, there are a number of cycle facilities that can be accessed around Caernarfon and the application site. These can be seen below on **Figure 4.3**.

Figure 4.3 – Cycle Facilities – Caernarfon



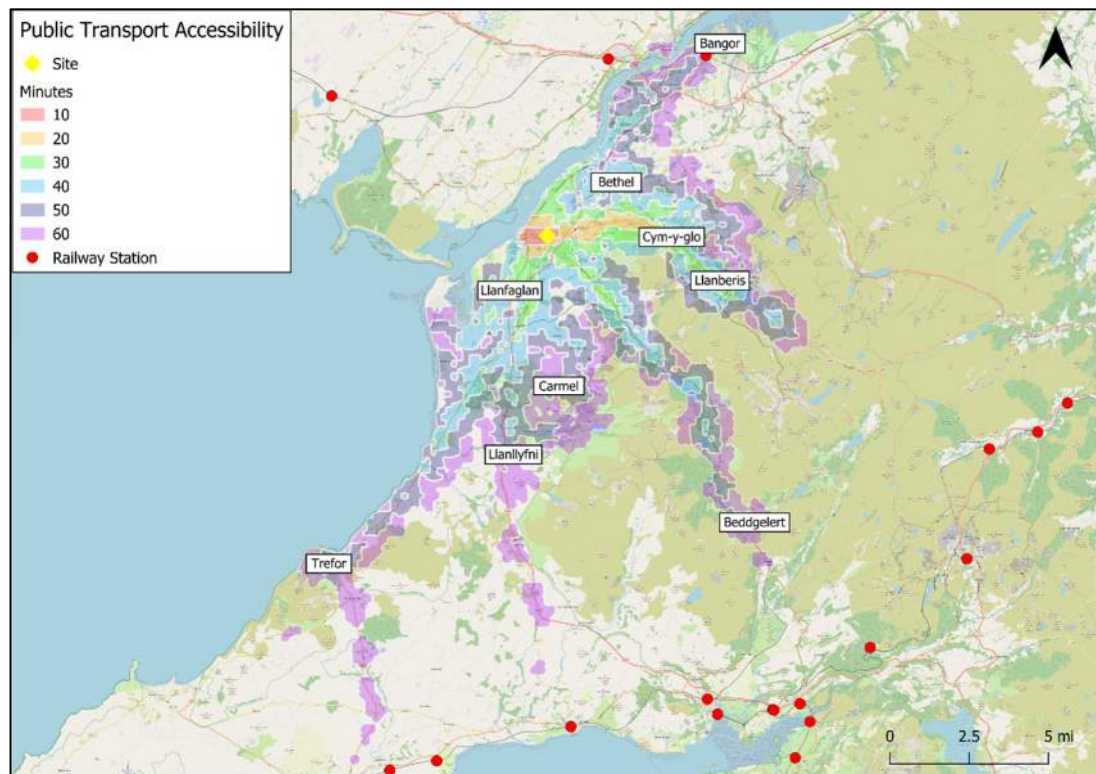
- 4.9 As can be seen from the above, an integrated network for cycling is located on the north-western site boundary, along the A4086 Llanberis Road, linking the application site to Caernarfon town centre and Pont-rug.
- 4.10 Gwynedd Council have proposals for new active travel link which runs between Caernarfon and Llanrug. In the vicinity of the site the route will run along the northern side of the A4086 Llanberis Road providing a connection between Cibyn Industrial Estate in the north and the A4871 roundabout in the southwest. This route comprises a shared footway / cycle route achieved through widening of existing footways and introduction of new crossing points. This will provide a significant benefit to active travel in the local area and the development site.
- 4.11 Having regard to the above, the application site is within an acceptable cycle distance of a range of areas and associated facilities, cycling is considered to be a viable alternative to private car use for prospective residents.

Access by Public Transport

Bus

- 4.12 The closest bus stops to the application site is located 213 ft (WB) and 262 ft (EB) to the south-west of the site access and are served by bus services C7 and S1. Bus service C7 offers a circular service, from Caernarfon bus station, which has two services running per day, Monday-Friday. Bus service S1 offers a service from Caernarfon to Betws y Coed via Llanberis, which runs every hour Monday – Sunday.
- 4.13 The level of accessibility by public transport has been analysed using GIS TRACC software to assess the accessibility of the site and is shown on **Figure 4.4** below. The figure illustrates the distance that can be travelled within 60 minutes by public transport to and from the site, which includes the time taken to walk to the bus stops.

Figure 4.4 – Public Transport Accessibility



- 4.14 The above demonstrates that the site is within a close proximity to public transport links, serving both the local area and other destinations further afield. The figure shows that key areas of Bangor, Bethel, Llanberis, Beddgelert, Llanllyfni, Carmel and Trefor, amongst others, are all within an acceptable 60-minute commute time.

Summary

- 4.15 Having regard to the above, it is considered that the site benefits from good levels of accessibility by sustainable modes. Access to the site on foot and by cycle is of a good standard and there are bus and train services available providing access to a range of local destinations.
- 4.16 These findings demonstrate that prospective residents will not be wholly reliant on the private car.

5 ANTICIPATED TRANSPORT IMPACTS

Overview

- 5.1 This chapter presents an estimate the number of trips generated by the proposed net increase in development and draws conclusions on the anticipated impact of the development on the local highway network.

Trip Generation

- 5.2 In order to estimate the trip generating potential of the proposed net increase in development, average trip rates from the industry-standard TRICS Database have been obtained. The selection criteria for the TRICS based trip rates is as follows:

- i) Residential;
- ii) Houses privately owned
- iii) Multi modal surveys;
- iv) Selection by number of dwellings (18 to 72);
- v) Weekday surveys only; and
- vi) Only sites in 'Edge of Town' locations have been selected.

- 5.3 The multi modal TRICS outputs for the development are presented in **Appendix E** and are summarised in **Table 5.1** below.

Table 5.1 - Estimated Trip Rates Associated with the Development				
Mode	Weekday AM Peak Hour		Weekday PM Peak Hour	
	Arrivals	Departures	Arrivals	Departures
Vehicles	0.206	0.378	0.343	0.202
Cycles	0.008	0.008	0.007	0.008
Pedestrians	0.043	0.118	0.04	0.054
Pub. Trans.	0.000	0.023	0.018	0.003

- 5.4 The estimated trip generation associated with the proposed development is therefore as summarised in **Table 5.2** below.

Table 5.2 - Estimated Trip Generation – (Net Increase of 36 Dwellings)				
Mode	Weekday AM Peak Hour		Weekday PM Peak Hour	
	Arrivals	Departures	Arrivals	Departures
Vehicles	7	14	12	7
Cycles	0	0	0	0
Pedestrians	2	4	1	2
Pub. Trans.	0	1	1	0

- 5.5 As detailed above, it is estimated that the scheme will generate a net increase of 21 two-way vehicle movements in the AM peak hour and 19 two-way vehicle movements in the PM peak hour. Volumetrically, this equates to around 1 additional vehicle movement every 3 minutes or so in both the AM and PM peak hours.
- 5.6 The effect of this additional traffic will not have a material impact on the operation of the local highway network and no further detailed assessment is required. The traffic impact of the scheme is therefore acceptable in planning terms.

6 SUMMARY AND CONCLUSIONS

- 6.1 SCP have been instructed by Datrys to provide transport planning and highways advice in relation to a proposed residential development, comprising 36 dwellings, on land located to the southeast of the A4086 Llanberis Road, Caernarfon.
- 6.2 Vehicular access to the development will be provided by a new priority controlled junction off the A4086 Llanberis Road. The site access has been designed to typical residential standards and will provide a 5.5m wide access, 6m junction radii and a 2m wide continuous footway on both sides of the road.
- 6.3 The site access provides visibility splays that have an 'x' (minor arm setback distance) of 2.4m and a 'y' (major road visibility) distance of 102m to the east, without impacting on the protected tree, and 120m to the west. These visibility splays meets the requirements set out in Technical Advice Note (TAN) Wales 18 Wales for the observed traffic speeds / speed limit of the road.
- 6.4 The proposed development will provide a 2m wide footway along the sites frontage. A separate pedestrian access is also proposed to the south of the site which provides a connection onto the existing footway through the residential development to the south and provides a link to the bus stop.
- 6.5 The personal injury accident data for the most recently available five year period has been reviewed and does not represent a material concern in the context of the proposed development.
- 6.6 It has been demonstrated that the development is sustainable with good accessibility to the site provided to those travelling by foot, bicycle and public transport.
- 6.7 It is estimated that the scheme will generate a net increase of 21 two-way vehicle movements in the AM peak hour and 19 two-way vehicle movements in the PM peak hour. Volumetrically, this equates to around 1 additional vehicle movement every 3 minutes or so in both the AM and PM peak hours. The effect of this additional traffic on the local highway network will be barely perceptible during the peak hours and less so outside of the peak periods. The effect of this additional traffic will not have a material impact on the operation of the local highway network and no further detailed assessment is required. The traffic impact of the scheme is therefore acceptable in planning terms.
- 6.8 It is therefore considered that the application proposals are acceptable with regard to transport.

S|C|P

APPENDIX A

Automatic Classified Counts, Caernarfon

LOCATION: A4086 LLANBERIS ROAD

Direction : WESTBOUND

Thursday 05/09/2024	VEHICLE CLASSIFICATION													TOTAL
Hr Ending	1	2	3	4	5	6	7	8	9	10	11	12	13	
1	2	1	0	0	0	0	0	0	0	0	0	0	0	3
2	3	0	0	0	0	0	0	0	0	0	0	0	0	3
3	1	0	0	0	0	0	0	0	0	0	0	0	0	1
4	1	0	0	0	0	0	0	0	0	0	0	0	0	1
5	2	3	0	0	0	0	0	0	0	0	0	0	0	5
6	11	4	0	0	0	0	0	0	0	0	0	2	0	17
7	22	13	2	0	1	0	0	0	0	0	0	4	0	42
8	97	30	1	0	2	0	1	1	1	0	0	2	0	135
9	243	39	0	0	2	0	0	0	0	0	0	1	0	285
10	238	33	1	0	2	0	0	0	0	0	0	4	0	278
11	198	41	0	0	0	0	0	1	0	0	0	8	0	248
12	185	36	0	0	0	0	1	0	0	0	0	5	0	227
13	215	49	1	0	3	0	1	0	0	0	0	5	0	274
14	210	42	0	0	0	0	0	0	0	0	0	6	0	258
15	171	30	0	0	2	0	0	0	1	0	0	5	0	209
16	222	43	0	0	1	0	0	0	0	0	0	6	0	272
17	240	35	0	0	0	0	0	0	0	0	0	0	0	275
18	251	27	0	0	0	0	0	2	0	0	0	1	0	281
19	172	15	0	0	0	0	0	0	0	0	0	1	0	188
20	119	6	0	0	0	0	0	0	0	0	0	0	0	125
21	77	7	0	0	0	0	0	0	0	0	0	1	0	85
22	49	4	0	0	0	0	0	0	0	0	0	0	0	53
23	23	2	0	0	0	0	0	0	0	0	0	0	0	25
24	17	2	0	0	0	0	0	0	0	0	0	0	0	19
7-19	2442	420	3	0	12	0	3	4	2	0	0	44	0	2930
6-22	2709	450	5	0	13	0	3	4	2	0	0	49	0	3235
6-24	2749	454	5	0	13	0	3	4	2	0	0	49	0	3279
0-24	2769	462	5	0	13	0	3	4	2	0	0	51	0	3309

Direction : EASTBOUND

Thursday 05/09/2024	VEHICLE CLASSIFICATION													TOTAL
Hr Ending	1	2	3	4	5	6	7	8	9	10	11	12	13	
1	5	2	0	0	0	0	0	0	0	0	0	0	0	7
2	3	0	0	0	0	0	0	0	0	0	0	0	0	3
3	2	0	0	0	0	0	0	0	0	0	0	0	0	2
4	6	0	0	0	0	0	0	0	0	0	0	0	0	6
5	7	1	0	0	0	0	0	0	0	0	0	0	0	8
6	55	2	0	0	0	0	0	0	0	0	0	0	0	57
7	48	17	0	0	0	0	0	0	0	0	0	1	0	66
8	133	31	0	0	1	0	0	1	0	0	0	4	0	170
9	202	35	2	0	0	0	1	0	0	0	0	4	0	244
10	179	37	0	1	0	0	0	0	0	0	0	4	0	221
11	148	39	1	0	1	0	0	0	0	0	0	6	0	195
12	168	30	1	0	3	0	0	0	0	0	0	7	0	209
13	213	38	2	0	1	0	0	0	0	0	0	3	0	257
14	192	40	1	0	1	0	0	0	0	0	0	3	0	237
15	187	31	1	0	3	0	0	1	0	0	0	5	0	228
16	188	32	0	0	2	0	0	0	0	0	0	2	0	224
17	267	35	0	0	0	0	0	0	2	0	0	1	0	305
18	271	16	0	0	0	0	0	0	0	0	0	1	0	288
19	141	11	0	0	0	0	0	0	0	0	0	2	0	154
20	106	9	0	0	0	0	0	0	0	0	0	0	0	115
21	84	5	0	0	0	0	0	0	0	0	0	0	0	89
22	57	2	0	0	0	0	0	0	0	0	0	0	0	59
23	34	1	0	0	1	0	0	0	0	0	0	1	0	37
24	16	0	0	0	0	0	0	0	0	0	0	0	0	16
7-19	2289	375	8	1	12	0	1	2	2	0	0	42	0	2732
6-22	2584	408	8	1	12	0	1	2	2	0	0	43	0	3061
6-24	2634	409	8	1	13	0	1	2	2	0	0	44	0	3114
0-24	2712	414	8	1	13	0	1	2	2	0	0	44	0	3197

Automatic Classified Counts, Caernarfon

LOCATION: A4086 LLANBERIS ROAD

Direction : WESTBOUND

Thursday 05/09/2024	VEHICLE SPEED (MPH)												TOTAL
Hr Ending	0-10	11-20	21-30	31-35	36-40	41-45	46-50	51-55	56-60	61-70	71-80	81-120	
1	0	0	1	2	0	0	0	0	0	0	0	0	3
2	0	0	1	0	2	0	0	0	0	0	0	0	3
3	0	0	0	0	0	1	0	0	0	0	0	0	1
4	0	0	0	1	0	0	0	0	0	0	0	0	1
5	0	0	5	0	0	0	0	0	0	0	0	0	5
6	0	0	7	6	4	0	0	0	0	0	0	0	17
7	0	1	20	15	5	1	0	0	0	0	0	0	42
8	0	0	67	49	14	5	0	0	0	0	0	0	135
9	0	3	158	104	19	0	1	0	0	0	0	0	285
10	0	2	202	63	11	0	0	0	0	0	0	0	278
11	0	20	154	65	8	1	0	0	0	0	0	0	248
12	0	9	126	70	20	2	0	0	0	0	0	0	227
13	0	0	31	134	86	22	1	0	0	0	0	0	274
14	0	0	43	126	71	15	2	1	0	0	0	0	258
15	0	0	38	85	76	9	0	1	0	0	0	0	209
16	0	0	33	120	100	17	2	0	0	0	0	0	272
17	0	0	28	101	121	21	3	1	0	0	0	0	275
18	0	0	49	104	102	24	2	0	0	0	0	0	281
19	0	1	13	86	80	7	1	0	0	0	0	0	188
20	0	0	11	43	57	12	1	0	1	0	0	0	125
21	0	0	15	30	29	9	1	1	0	0	0	0	85
22	0	0	5	24	16	5	1	1	1	0	0	0	53
23	0	0	1	12	8	4	0	0	0	0	0	0	25
24	0	0	1	7	6	3	1	1	0	0	0	0	19

7-19	0	35	942	1107	708	123	12	3	0	0	0	0	2930
6-22	0	36	993	1219	815	150	15	5	2	0	0	0	3235
6-24	0	36	995	1238	829	157	16	6	2	0	0	0	3279
0-24	0	36	1009	1247	835	158	16	6	2	0	0	0	3309

Direction : EASTBOUND

Thursday 05/09/2024	VEHICLE SPEED (MPH)												TOTAL
Hr Ending	0-10	11-20	21-30	31-35	36-40	41-45	46-50	51-55	56-60	61-70	71-80	81-120	
1	0	0	4	3	0	0	0	0	0	0	0	0	7
2	0	0	1	1	1	0	0	0	0	0	0	0	3
3	0	0	1	0	1	0	0	0	0	0	0	0	2
4	0	0	1	4	0	0	0	1	0	0	0	0	6
5	0	0	4	3	1	0	0	0	0	0	0	0	8
6	0	0	34	15	6	1	1	0	0	0	0	0	57
7	0	6	41	12	7	0	0	0	0	0	0	0	66
8	3	25	99	26	14	3	0	0	0	0	0	0	170
9	4	61	131	37	10	1	0	0	0	0	0	0	244
10	2	59	125	29	5	1	0	0	0	0	0	0	221
11	5	65	92	27	6	0	0	0	0	0	0	0	195
12	29	61	54	41	22	2	0	0	0	0	0	0	209
13	0	1	28	151	71	6	0	0	0	0	0	0	257
14	0	0	42	118	64	13	0	0	0	0	0	0	237
15	0	0	32	123	67	6	0	0	0	0	0	0	228
16	0	1	34	97	81	11	0	0	0	0	0	0	224
17	0	0	43	148	98	15	1	0	0	0	0	0	305
18	0	0	28	147	97	16	0	0	0	0	0	0	288
19	0	0	23	73	51	6	1	0	0	0	0	0	154
20	0	1	19	50	36	8	1	0	0	0	0	0	115
21	0	0	14	40	24	9	1	0	1	0	0	0	89
22	0	0	6	22	25	5	1	0	0	0	0	0	59
23	0	0	4	16	10	3	3	0	0	1	0	0	37
24	0	0	1	4	5	3	3	0	0	0	0	0	16

7-19	43	273	731	1017	586	80	2	0	0	0	0	0	2732
6-22	43	280	811	1141	678	102	5	0	1	0	0	0	3061
6-24	43	280	816	1161	693	108	11	0	1	1	0	0	3114
0-24	43	280	861	1187	702	109	12	1	1	1	0	0	3197

Automatic Classified Counts, Caernarfon

LOCATION: A4086 LLANBERIS ROAD

Direction : WESTBOUND

Friday 06/09/2024	VEHICLE CLASSIFICATION													TOTAL
Hr Ending	1	2	3	4	5	6	7	8	9	10	11	12	13	
1	8	0	0	0	0	0	0	0	0	0	0	0	0	8
2	2	1	0	0	0	0	0	0	0	0	0	0	0	3
3	2	0	0	0	0	0	0	0	0	0	0	0	0	2
4	1	0	0	0	0	0	0	0	0	0	0	0	0	1
5	1	0	0	0	0	0	0	0	0	0	0	0	0	1
6	12	7	0	0	0	0	0	0	0	0	0	1	0	20
7	22	9	1	0	0	0	0	0	0	0	0	3	0	35
8	97	31	0	0	2	0	0	0	2	0	0	4	0	136
9	179	45	0	0	2	0	0	0	0	0	0	4	0	230
10	212	37	0	0	0	0	0	0	0	0	0	5	0	254
11	192	44	0	0	3	0	0	0	0	0	1	6	0	246
12	208	35	0	0	0	0	0	0	1	0	0	4	0	248
13	231	42	0	0	0	0	0	1	0	0	0	1	0	275
14	184	41	0	0	1	0	0	0	0	0	0	4	0	230
15	231	37	0	0	2	0	0	0	0	0	0	5	0	275
16	212	36	0	0	0	0	0	0	0	0	0	5	0	253
17	218	35	0	0	0	0	0	0	0	0	0	2	0	255
18	239	28	0	0	0	0	0	0	0	0	0	2	0	269
19	155	21	0	0	0	0	0	0	0	0	0	1	0	177
20	122	20	0	0	0	0	0	0	0	0	0	1	0	143
21	89	7	0	0	0	0	0	0	0	0	0	1	0	97
22	63	6	1	0	0	0	0	0	0	0	0	0	0	70
23	45	4	0	0	0	0	0	0	0	0	0	0	0	49
24	21	1	0	0	0	0	0	0	0	0	0	0	0	22
7-19	2358	432	0	0	10	0	0	1	3	0	1	43	0	2848
6-22	2654	474	2	0	10	0	0	1	3	0	1	48	0	3193
6-24	2720	479	2	0	10	0	0	1	3	0	1	48	0	3264
0-24	2746	487	2	0	10	0	0	1	3	0	1	49	0	3299

Direction : EASTBOUND

Friday 06/09/2024	VEHICLE CLASSIFICATION													TOTAL
Hr Ending	1	2	3	4	5	6	7	8	9	10	11	12	13	
1	4	0	0	0	0	0	0	0	0	0	0	0	0	4
2	5	0	0	0	0	0	0	0	0	0	0	0	0	5
3	2	1	0	0	0	0	0	0	0	0	0	0	0	3
4	4	0	0	0	0	0	0	0	0	0	0	0	0	4
5	8	0	0	0	0	0	0	0	0	0	0	0	0	8
6	44	2	0	0	0	0	0	0	0	0	0	0	0	46
7	37	8	0	0	0	0	0	0	0	0	0	1	0	46
8	133	26	1	0	1	0	0	0	0	0	0	2	0	163
9	184	27	1	0	0	0	0	0	1	0	0	2	0	215
10	173	40	0	0	1	0	0	0	1	0	0	2	0	217
11	173	34	0	0	0	0	0	0	0	0	0	7	0	214
12	177	43	0	0	0	0	0	0	0	0	0	7	0	227
13	195	28	0	0	1	0	0	0	0	0	0	3	0	227
14	184	29	0	0	2	0	0	0	0	0	0	4	0	219
15	162	30	1	0	3	0	0	0	0	0	0	3	0	199
16	223	30	0	0	2	0	0	0	0	0	0	2	0	257
17	262	28	1	0	0	0	0	0	1	0	0	3	0	295
18	239	24	0	0	0	0	0	0	0	0	0	3	0	266
19	133	12	0	0	1	0	0	0	0	0	0	3	0	149
20	137	18	0	0	0	0	0	0	1	0	0	2	0	158
21	76	11	0	0	0	0	0	0	0	0	0	1	0	88
22	64	4	0	0	0	0	0	0	0	0	0	0	0	68
23	39	4	0	0	0	0	0	0	1	0	0	1	0	45
24	33	4	0	0	0	0	0	0	0	0	0	0	0	37
7-19	2238	351	4	0	11	0	0	0	3	0	0	41	0	2648
6-22	2552	392	4	0	11	0	0	0	4	0	0	45	0	3008
6-24	2624	400	4	0	11	0	0	0	5	0	0	46	0	3090
0-24	2691	403	4	0	11	0	0	0	5	0	0	46	0	3160

Automatic Classified Counts, Caernarfon

LOCATION: A4086 LLANBERIS ROAD

Direction : WESTBOUND

Friday 06/09/2024	VEHICLE SPEED (MPH)												TOTAL
Hr Ending	0-10	11-20	21-30	31-35	36-40	41-45	46-50	51-55	56-60	61-70	71-80	81-120	
1	0	0	0	2	5	0	0	1	0	0	0	0	8
2	0	0	0	0	2	1	0	0	0	0	0	0	3
3	0	0	0	1	0	0	0	1	0	0	0	0	2
4	0	0	0	0	1	0	0	0	0	0	0	0	1
5	0	0	0	0	1	0	0	0	0	0	0	0	1
6	0	0	5	5	6	3	1	0	0	0	0	0	20
7	0	0	2	15	12	4	0	1	1	0	0	0	35
8	0	1	8	48	65	13	1	0	0	0	0	0	136
9	0	0	14	85	108	19	3	1	0	0	0	0	230
10	0	0	21	112	95	21	1	2	1	1	0	0	254
11	0	0	33	114	87	11	1	0	0	0	0	0	246
12	0	0	42	97	90	17	2	0	0	0	0	0	248
13	0	0	34	114	106	18	3	0	0	0	0	0	275
14	0	1	22	109	78	16	4	0	0	0	0	0	230
15	0	1	40	127	85	18	4	0	0	0	0	0	275
16	0	0	22	115	94	18	4	0	0	0	0	0	253
17	0	0	8	102	104	34	6	0	0	1	0	0	255
18	0	0	5	78	144	41	1	0	0	0	0	0	269
19	0	0	12	58	73	28	5	1	0	0	0	0	177
20	0	0	12	44	69	16	1	1	0	0	0	0	143
21	0	0	14	42	27	14	0	0	0	0	0	0	97
22	0	0	9	25	28	6	2	0	0	0	0	0	70
23	0	0	3	20	20	4	1	1	0	0	0	0	49
24	0	0	1	6	8	5	2	0	0	0	0	0	22
7-19	0	3	261	1159	1129	254	35	4	1	2	0	0	2848
6-22	0	3	298	1285	1265	294	38	6	2	2	0	0	3193
6-24	0	3	302	1311	1293	303	41	7	2	2	0	0	3264
0-24	0	3	307	1319	1308	307	42	9	2	2	0	0	3299

Direction : EASTBOUND

Friday 06/09/2024	VEHICLE SPEED (MPH)												TOTAL
Hr Ending	0-10	11-20	21-30	31-35	36-40	41-45	46-50	51-55	56-60	61-70	71-80	81-120	
1	0	0	0	2	1	1	0	0	0	0	0	0	4
2	0	0	2	1	2	0	0	0	0	0	0	0	5
3	0	0	1	0	2	0	0	0	0	0	0	0	3
4	0	0	0	1	3	0	0	0	0	0	0	0	4
5	0	0	0	1	7	0	0	0	0	0	0	0	8
6	0	0	3	17	18	8	0	0	0	0	0	0	46
7	0	0	7	18	13	7	1	0	0	0	0	0	46
8	0	0	14	52	81	16	0	0	0	0	0	0	163
9	0	0	16	102	75	16	6	0	0	0	0	0	215
10	0	0	36	99	70	11	1	0	0	0	0	0	217
11	0	2	26	111	62	11	2	0	0	0	0	0	214
12	0	1	32	116	67	10	1	0	0	0	0	0	227
13	0	0	28	102	81	14	2	0	0	0	0	0	227
14	1	0	31	93	72	19	3	0	0	0	0	0	219
15	0	0	10	93	76	15	5	0	0	0	0	0	199
16	0	0	27	126	82	20	2	0	0	0	0	0	257
17	0	0	32	117	122	19	4	1	0	0	0	0	295
18	0	0	30	110	106	18	1	1	0	0	0	0	266
19	0	0	12	66	61	9	1	0	0	0	0	0	149
20	0	1	23	60	60	13	1	0	0	0	0	0	158
21	0	0	17	30	29	11	1	0	0	0	0	0	88
22	0	0	5	30	26	7	0	0	0	0	0	0	68
23	0	0	3	14	17	7	3	1	0	0	0	0	45
24	0	0	2	20	11	2	1	0	0	1	0	0	37
7-19	1	3	294	1187	955	178	28	2	0	0	0	0	2648
6-22	1	4	346	1325	1083	216	31	2	0	0	0	0	3008
6-24	1	4	351	1359	1111	225	35	3	0	1	0	0	3090
0-24	1	4	357	1381	1144	234	35	3	0	1	0	0	3160

Automatic Classified Counts, Caernarfon

LOCATION: A4086 LLANBERIS ROAD

Direction : WESTBOUND

Saturday 07/09/2024	VEHICLE CLASSIFICATION													TOTAL
Hr Ending	1	2	3	4	5	6	7	8	9	10	11	12	13	
1	19	3	0	0	0	0	0	0	0	0	0	0	0	22
2	9	0	0	0	0	0	0	0	0	0	0	0	0	9
3	3	2	0	0	0	0	0	0	0	0	0	0	0	5
4	1	0	0	0	0	0	0	0	0	0	0	0	0	1
5	3	3	0	0	0	0	0	0	0	0	0	0	0	6
6	5	0	0	0	0	0	0	0	0	0	0	0	0	5
7	13	5	0	0	0	0	0	0	0	0	0	3	0	21
8	39	6	0	0	0	0	0	0	0	0	0	1	0	46
9	95	20	2	0	1	0	0	0	0	0	0	1	0	119
10	183	29	0	0	2	0	2	0	0	0	0	3	0	219
11	161	24	0	0	0	0	1	0	0	0	0	2	0	188
12	181	30	0	0	0	0	0	1	0	0	0	2	0	214
13	170	27	0	0	1	0	0	0	0	0	0	1	0	199
14	195	18	0	0	1	0	1	0	0	0	1	2	0	218
15	180	26	0	0	0	0	1	0	0	0	0	4	0	211
16	164	15	0	1	1	0	0	0	0	0	0	2	0	183
17	187	18	0	0	0	0	0	0	0	0	0	1	0	206
18	186	16	0	0	0	0	0	0	0	0	0	1	0	203
19	145	17	0	0	0	0	0	0	0	0	0	1	0	163
20	102	14	0	0	0	0	0	0	0	0	0	1	0	117
21	73	12	0	0	0	0	0	0	0	0	0	1	0	86
22	55	7	0	0	0	0	0	0	0	0	0	0	0	62
23	44	6	0	0	0	0	0	0	0	0	0	0	0	50
24	31	2	0	0	0	0	0	0	0	0	0	0	0	33
7-19	1886	246	2	1	6	0	5	1	0	0	1	21	0	2169
6-22	2129	284	2	1	6	0	5	1	0	0	1	26	0	2455
6-24	2204	292	2	1	6	0	5	1	0	0	1	26	0	2538
0-24	2244	300	2	1	6	0	5	1	0	0	1	26	0	2586

Direction : EASTBOUND

Saturday 07/09/2024	VEHICLE CLASSIFICATION													TOTAL
Hr Ending	1	2	3	4	5	6	7	8	9	10	11	12	13	
1	17	1	0	0	0	0	0	0	0	0	0	0	0	18
2	5	1	0	0	0	0	0	0	0	0	0	0	0	6
3	3	2	0	0	0	0	0	0	0	0	0	0	0	5
4	6	2	0	0	0	0	0	0	0	0	0	0	0	8
5	4	0	0	0	0	0	0	0	0	0	0	0	0	4
6	12	3	0	0	0	0	0	0	0	0	0	0	0	15
7	20	3	0	0	0	0	0	0	0	0	0	1	0	24
8	64	11	0	0	1	0	0	0	0	0	0	1	0	77
9	86	14	0	0	0	0	1	0	0	0	0	2	0	103
10	119	12	0	0	1	0	0	0	0	0	0	3	0	135
11	168	22	0	0	0	0	0	0	0	0	0	2	0	192
12	196	23	0	0	1	0	0	0	0	0	0	1	0	221
13	165	20	0	0	0	0	0	0	0	0	0	2	0	187
14	152	17	0	0	0	0	0	0	0	0	1	4	0	174
15	173	10	0	1	0	0	0	0	0	0	0	2	0	186
16	154	11	0	0	0	0	0	0	0	0	0	2	0	167
17	176	18	0	0	1	0	0	0	0	0	0	2	0	197
18	160	14	0	0	0	0	0	0	0	0	0	2	0	176
19	120	10	0	0	0	0	0	0	0	0	0	2	0	132
20	107	10	1	0	0	0	0	0	0	0	0	1	0	119
21	65	9	0	0	0	0	0	0	0	0	0	1	0	75
22	52	5	0	0	0	0	0	0	0	0	0	0	0	57
23	34	3	0	0	0	0	0	0	0	0	0	1	0	38
24	35	3	0	0	0	0	0	0	0	0	0	0	0	38
7-19	1733	182	0	1	4	0	1	0	0	0	1	25	0	1947
6-22	1977	209	1	1	4	0	1	0	0	0	1	28	0	2222
6-24	2046	215	1	1	4	0	1	0	0	0	1	29	0	2298
0-24	2093	224	1	1	4	0	1	0	0	0	1	29	0	2354

Automatic Classified Counts, Caernarfon

LOCATION: A4086 LLANBERIS ROAD

Direction : WESTBOUND

Saturday 07/09/2024	VEHICLE SPEED (MPH)												TOTAL
Hr Ending	0-10	11-20	21-30	31-35	36-40	41-45	46-50	51-55	56-60	61-70	71-80	81-120	
1	0	0	3	5	9	4	1	0	0	0	0	0	22
2	0	0	0	1	5	3	0	0	0	0	0	0	9
3	0	0	0	1	4	0	0	0	0	0	0	0	5
4	0	0	0	0	0	1	0	0	0	0	0	0	1
5	0	0	1	3	2	0	0	0	0	0	0	0	6
6	0	0	0	2	1	2	0	0	0	0	0	0	5
7	0	2	5	6	4	4	0	0	0	0	0	0	21
8	0	0	7	14	17	5	3	0	0	0	0	0	46
9	0	0	13	39	53	13	1	0	0	0	0	0	119
10	0	0	39	105	61	11	3	0	0	0	0	0	219
11	0	0	30	83	60	13	2	0	0	0	0	0	188
12	0	0	27	103	73	9	2	0	0	0	0	0	214
13	0	0	16	87	82	10	4	0	0	0	0	0	199
14	0	0	20	100	81	13	3	1	0	0	0	0	218
15	0	0	31	86	73	19	2	0	0	0	0	0	211
16	0	0	24	78	57	21	3	0	0	0	0	0	183
17	0	0	15	67	90	29	5	0	0	0	0	0	206
18	0	2	7	55	114	24	0	0	0	1	0	0	203
19	0	3	8	53	82	14	1	1	1	0	0	0	163
20	0	0	9	38	57	12	0	1	0	0	0	0	117
21	0	0	18	36	27	4	1	0	0	0	0	0	86
22	0	0	14	28	12	8	0	0	0	0	0	0	62
23	0	0	11	15	16	8	0	0	0	0	0	0	50
24	0	0	3	12	9	6	2	0	1	0	0	0	33
7-19	0	5	237	870	843	181	29	2	1	1	0	0	2169
6-22	0	7	283	978	943	209	30	3	1	1	0	0	2455
6-24	0	7	297	1005	968	223	32	3	2	1	0	0	2538
0-24	0	7	301	1017	989	233	33	3	2	1	0	0	2586

Direction : EASTBOUND

Saturday 07/09/2024	VEHICLE SPEED (MPH)												TOTAL
Hr Ending	0-10	11-20	21-30	31-35	36-40	41-45	46-50	51-55	56-60	61-70	71-80	81-120	
1	0	0	0	4	9	4	1	0	0	0	0	0	18
2	0	0	0	2	1	2	1	0	0	0	0	0	6
3	0	0	0	2	1	2	0	0	0	0	0	0	5
4	0	0	1	1	6	0	0	0	0	0	0	0	8
5	0	0	1	1	0	2	0	0	0	0	0	0	4
6	0	0	1	7	4	2	1	0	0	0	0	0	15
7	0	0	3	6	11	3	1	0	0	0	0	0	24
8	0	0	6	27	31	11	1	0	0	1	0	0	77
9	0	1	7	40	42	11	1	1	0	0	0	0	103
10	0	0	18	63	42	10	1	1	0	0	0	0	135
11	0	1	30	87	65	7	1	1	0	0	0	0	192
12	0	3	41	98	72	6	0	1	0	0	0	0	221
13	0	1	20	91	60	12	3	0	0	0	0	0	187
14	0	1	18	79	60	13	3	0	0	0	0	0	174
15	0	0	27	70	77	11	1	0	0	0	0	0	186
16	0	0	14	67	70	13	3	0	0	0	0	0	167
17	0	1	22	83	75	14	2	0	0	0	0	0	197
18	0	0	11	74	75	14	0	1	1	0	0	0	176
19	0	1	6	61	51	11	1	1	0	0	0	0	132
20	0	0	7	50	50	11	1	0	0	0	0	0	119
21	0	0	14	26	27	5	2	1	0	0	0	0	75
22	0	0	4	29	21	3	0	0	0	0	0	0	57
23	0	0	4	22	11	1	0	0	0	0	0	0	38
24	0	0	3	11	12	8	2	1	1	0	0	0	38
7-19	0	9	220	840	720	133	17	6	1	1	0	0	1947
6-22	0	9	248	951	829	155	21	7	1	1	0	0	2222
6-24	0	9	255	984	852	164	23	8	2	1	0	0	2298
0-24	0	9	258	1001	873	176	26	8	2	1	0	0	2354

Automatic Classified Counts, Caernarfon

LOCATION: A4086 LLANBERIS ROAD

Direction : WESTBOUND

Sunday 08/09/2024	VEHICLE CLASSIFICATION													TOTAL
Hr Ending	1	2	3	4	5	6	7	8	9	10	11	12	13	
1	13	3	0	0	0	0	0	0	0	0	0	0	0	16
2	11	3	0	0	0	0	0	0	0	0	0	0	0	14
3	9	1	0	0	0	0	0	0	0	0	0	0	0	10
4	6	1	0	0	0	0	0	0	0	0	0	0	0	7
5	3	1	0	0	0	0	0	0	0	0	0	0	0	4
6	4	3	0	0	0	0	0	0	0	0	0	1	0	8
7	15	3	0	0	1	0	0	0	0	0	0	1	0	20
8	26	6	0	0	0	0	0	0	0	0	0	2	0	34
9	44	6	0	0	0	0	0	0	0	0	0	0	0	50
10	77	8	1	0	1	0	2	0	0	0	0	2	0	91
11	116	15	0	0	0	0	0	0	0	0	0	1	0	132
12	149	19	0	1	0	0	0	0	0	0	0	1	0	170
13	185	27	0	0	0	0	0	0	0	0	0	2	0	214
14	140	17	0	0	1	0	0	0	0	0	0	1	0	159
15	151	15	0	0	1	0	0	0	0	0	0	1	0	168
16	147	14	0	0	0	0	0	0	0	0	0	1	0	162
17	122	13	0	0	0	0	0	0	0	0	0	1	0	136
18	100	15	0	0	0	0	0	0	0	0	0	2	0	117
19	81	11	0	0	0	0	0	0	0	0	1	1	0	94
20	73	9	0	0	0	0	0	0	0	0	0	0	0	82
21	51	4	0	0	0	0	0	0	0	0	0	0	0	55
22	44	1	0	0	0	0	0	0	0	0	0	0	0	45
23	13	0	0	0	0	0	0	0	0	0	0	0	0	13
24	15	0	0	0	0	0	0	0	0	0	0	0	0	15
7-19	1338	166	1	1	3	0	2	0	0	0	1	15	0	1527
6-22	1521	183	1	1	4	0	2	0	0	0	1	16	0	1729
6-24	1549	183	1	1	4	0	2	0	0	0	1	16	0	1757
0-24	1595	195	1	1	4	0	2	0	0	0	1	17	0	1816

Direction : EASTBOUND

Sunday 08/09/2024	VEHICLE CLASSIFICATION													TOTAL
Hr Ending	1	2	3	4	5	6	7	8	9	10	11	12	13	
1	11	4	0	0	0	0	0	0	0	0	0	0	0	15
2	11	2	0	0	0	0	0	0	0	0	0	0	0	13
3	9	1	0	0	0	0	0	0	0	0	0	0	0	10
4	5	1	0	0	0	0	0	0	0	0	0	0	0	6
5	0	0	0	0	0	0	0	0	0	0	0	0	0	0
6	4	2	0	0	0	0	0	0	0	0	0	0	0	6
7	15	3	0	0	1	0	0	0	0	0	0	1	0	20
8	37	5	0	0	0	0	0	0	0	0	0	1	0	43
9	41	5	0	0	1	0	0	0	0	0	0	0	0	47
10	61	8	0	0	0	0	0	0	0	0	0	1	0	70
11	102	11	1	0	0	0	1	0	0	0	0	2	0	117
12	137	14	0	0	2	0	0	0	0	0	0	1	0	154
13	169	24	0	0	0	0	0	0	0	0	0	1	0	194
14	155	9	0	0	0	0	0	0	0	0	0	1	0	165
15	131	14	0	0	0	0	0	0	0	0	0	2	0	147
16	136	14	0	0	0	0	0	0	0	0	0	1	0	151
17	116	7	0	0	0	0	0	0	0	0	0	1	0	124
18	92	8	0	0	0	0	0	0	0	0	0	3	0	103
19	90	12	0	0	0	0	0	0	0	0	1	1	0	104
20	72	9	0	0	0	0	0	0	0	0	0	0	0	81
21	41	4	1	0	0	0	0	0	0	0	0	0	0	46
22	33	1	0	0	0	0	0	0	0	0	0	0	0	34
23	16	0	0	0	0	0	0	0	0	0	0	0	0	16
24	13	2	0	0	0	0	0	0	0	0	0	0	0	15
7-19	1267	131	1	0	3	0	1	0	0	0	1	15	0	1419
6-22	1428	148	2	0	4	0	1	0	0	0	1	16	0	1600
6-24	1457	150	2	0	4	0	1	0	0	0	1	16	0	1631
0-24	1497	160	2	0	4	0	1	0	0	0	1	16	0	1681

Automatic Classified Counts, Caernarfon

LOCATION: A4086 LLANBERIS ROAD

Direction : WESTBOUND

Sunday 08/09/2024	VEHICLE SPEED (MPH)												TOTAL
Hr Ending	0-10	11-20	21-30	31-35	36-40	41-45	46-50	51-55	56-60	61-70	71-80	81-120	
1	0	0	2	5	5	1	2	1	0	0	0	0	16
2	0	0	4	2	5	3	0	0	0	0	0	0	14
3	0	0	0	0	8	2	0	0	0	0	0	0	10
4	0	0	2	1	2	2	0	0	0	0	0	0	7
5	0	0	1	1	2	0	0	0	0	0	0	0	4
6	0	0	0	4	4	0	0	0	0	0	0	0	8
7	0	0	3	8	4	5	0	0	0	0	0	0	20
8	0	0	8	8	8	6	4	0	0	0	0	0	34
9	0	0	4	17	22	5	2	0	0	0	0	0	50
10	0	1	7	42	34	6	0	1	0	0	0	0	91
11	0	0	13	60	48	8	3	0	0	0	0	0	132
12	0	0	9	81	72	8	0	0	0	0	0	0	170
13	1	0	32	103	65	12	1	0	0	0	0	0	214
14	0	0	24	64	62	9	0	0	0	0	0	0	159
15	0	0	18	63	79	7	1	0	0	0	0	0	168
16	0	0	20	65	65	6	5	1	0	0	0	0	162
17	0	0	13	50	49	22	1	1	0	0	0	0	136
18	0	0	14	54	37	8	4	0	0	0	0	0	117
19	0	1	12	40	32	7	2	0	0	0	0	0	94
20	0	1	8	18	40	12	3	0	0	0	0	0	82
21	0	0	6	16	25	8	0	0	0	0	0	0	55
22	0	0	7	9	22	6	1	0	0	0	0	0	45
23	0	0	1	4	6	2	0	0	0	0	0	0	13
24	0	0	2	5	4	3	1	0	0	0	0	0	15
7-19	1	2	174	647	573	104	23	3	0	0	0	0	1527
6-22	1	3	198	698	664	135	27	3	0	0	0	0	1729
6-24	1	3	201	707	674	140	28	3	0	0	0	0	1757
0-24	1	3	210	720	700	148	30	4	0	0	0	0	1816

Direction : EASTBOUND

Sunday 08/09/2024	VEHICLE SPEED (MPH)												TOTAL
Hr Ending	0-10	11-20	21-30	31-35	36-40	41-45	46-50	51-55	56-60	61-70	71-80	81-120	
1	0	0	1	3	6	3	2	0	0	0	0	0	15
2	0	0	0	4	8	1	0	0	0	0	0	0	13
3	0	0	0	4	2	3	1	0	0	0	0	0	10
4	0	0	1	2	1	0	2	0	0	0	0	0	6
5	0	0	0	0	0	0	0	0	0	0	0	0	0
6	0	0	2	2	2	0	0	0	0	0	0	0	6
7	0	0	5	2	10	2	1	0	0	0	0	0	20
8	0	0	7	14	17	4	1	0	0	0	0	0	43
9	0	0	6	13	19	6	3	0	0	0	0	0	47
10	0	0	10	28	23	8	1	0	0	0	0	0	70
11	0	0	13	55	39	9	1	0	0	0	0	0	117
12	0	0	11	76	57	9	1	0	0	0	0	0	154
13	0	1	15	101	70	7	0	0	0	0	0	0	194
14	0	1	27	67	58	10	2	0	0	0	0	0	165
15	0	0	25	74	41	5	2	0	0	0	0	0	147
16	0	0	20	64	56	11	0	0	0	0	0	0	151
17	0	0	11	58	42	12	1	0	0	0	0	0	124
18	0	1	12	43	39	6	2	0	0	0	0	0	103
19	0	0	7	40	43	9	5	0	0	0	0	0	104
20	0	0	4	31	30	15	1	0	0	0	0	0	81
21	0	0	3	20	19	4	0	0	0	0	0	0	46
22	0	1	7	10	8	5	2	1	0	0	0	0	34
23	0	0	1	7	5	1	2	0	0	0	0	0	16
24	0	0	2	4	8	0	1	0	0	0	0	0	15
7-19	0	3	164	633	504	96	19	0	0	0	0	0	1419
6-22	0	4	183	696	571	122	23	1	0	0	0	0	1600
6-24	0	4	186	707	584	123	26	1	0	0	0	0	1631
0-24	0	4	190	722	603	130	31	1	0	0	0	0	1681

Automatic Classified Counts, Caernarfon

LOCATION: A4086 LLANBERIS ROAD

Direction : WESTBOUND

Monday 09/09/2024	VEHICLE CLASSIFICATION													TOTAL
Hr Ending	1	2	3	4	5	6	7	8	9	10	11	12	13	
1	8	0	0	0	0	0	0	0	0	0	0	0	0	8
2	1	0	0	0	0	0	0	0	0	0	0	0	0	1
3	1	0	0	0	0	0	0	0	0	0	0	0	0	1
4	1	1	0	0	0	0	0	0	0	0	0	0	0	2
5	7	1	0	0	0	0	0	0	0	0	0	0	0	8
6	17	6	1	0	0	0	0	0	0	0	0	0	0	24
7	18	4	1	0	2	0	0	0	0	0	0	2	0	27
8	91	18	1	0	2	0	0	0	0	0	0	2	0	114
9	198	60	0	0	2	0	0	0	0	0	0	5	0	265
10	213	62	0	0	3	0	0	0	0	0	0	6	0	284
11	159	39	0	0	0	0	0	0	0	0	0	8	0	206
12	202	44	0	0	1	0	0	0	0	0	1	4	0	252
13	199	39	1	0	0	0	0	0	0	0	0	2	0	241
14	190	35	1	0	1	0	0	0	0	0	0	3	0	230
15	204	47	0	0	0	0	0	0	2	0	0	2	0	255
16	222	47	1	0	0	0	0	0	0	0	0	3	0	273
17	289	43	0	0	0	0	0	0	0	0	0	1	0	333
18	250	24	0	0	1	0	0	0	0	0	0	1	0	276
19	175	25	0	0	1	0	0	0	0	0	0	2	0	203
20	153	11	1	0	1	0	0	0	0	0	0	0	0	166
21	71	6	0	0	0	0	0	0	0	0	0	0	0	77
22	55	4	0	0	0	0	0	0	0	0	0	0	0	59
23	38	2	0	0	0	0	0	0	0	0	0	0	0	40
24	13	0	0	0	0	0	0	0	0	0	0	0	0	13
7-19	2392	483	4	0	11	0	0	0	2	0	1	39	0	2932
6-22	2689	508	6	0	14	0	0	0	2	0	1	41	0	3261
6-24	2740	510	6	0	14	0	0	0	2	0	1	41	0	3314
0-24	2775	518	7	0	14	0	0	0	2	0	1	41	0	3358

Direction : EASTBOUND

Monday 09/09/2024	VEHICLE CLASSIFICATION													TOTAL
Hr Ending	1	2	3	4	5	6	7	8	9	10	11	12	13	
1	5	1	0	0	0	0	0	0	0	0	0	0	0	6
2	3	0	0	0	0	0	0	0	0	0	0	0	0	3
3	3	1	0	0	0	0	0	0	0	0	0	0	0	4
4	4	1	0	0	0	0	0	0	0	0	0	0	0	5
5	14	2	0	0	0	0	0	0	0	0	0	0	0	16
6	65	1	0	0	0	0	0	0	0	0	0	0	0	66
7	43	9	0	0	0	0	0	0	0	0	0	1	0	53
8	116	25	1	0	2	0	1	0	0	0	0	3	0	148
9	189	39	0	0	1	0	0	0	0	0	0	1	0	230
10	146	50	0	0	0	0	0	0	1	0	0	4	0	201
11	150	35	1	1	0	0	0	2	0	0	0	4	0	193
12	161	25	0	0	0	0	0	0	0	0	0	4	0	190
13	205	34	1	0	1	0	0	0	0	0	1	2	0	244
14	182	36	0	0	0	0	0	0	1	0	0	2	0	221
15	174	30	0	0	0	0	0	0	0	0	0	2	0	206
16	190	33	1	0	2	0	0	0	0	0	0	4	0	230
17	244	25	0	0	1	0	1	1	0	0	0	1	0	273
18	248	22	0	0	0	0	0	0	0	0	0	1	0	271
19	143	14	1	0	1	0	0	0	0	0	0	3	0	162
20	100	15	0	0	0	0	0	0	0	0	0	1	0	116
21	66	8	0	0	0	0	0	0	0	0	0	0	0	74
22	46	6	0	0	0	0	0	0	0	0	0	1	0	53
23	28	0	0	0	0	0	0	0	0	0	0	1	0	29
24	13	0	0	0	0	0	0	0	0	0	0	0	0	13
7-19	2148	368	5	1	8	0	2	3	2	0	1	31	0	2569
6-22	2403	406	5	1	8	0	2	3	2	0	1	34	0	2865
6-24	2444	406	5	1	8	0	2	3	2	0	1	35	0	2907
0-24	2538	412	5	1	8	0	2	3	2	0	1	35	0	3007

Automatic Classified Counts, Caernarfon

LOCATION: A4086 LLANBERIS ROAD

Direction : WESTBOUND

Monday 09/09/2024	VEHICLE SPEED (MPH)												TOTAL
Hr Ending	0-10	11-20	21-30	31-35	36-40	41-45	46-50	51-55	56-60	61-70	71-80	81-120	
1	0	0	1	4	3	0	0	0	0	0	0	0	8
2	0	0	0	0	1	0	0	0	0	0	0	0	1
3	0	0	0	1	0	0	0	0	0	0	0	0	1
4	0	0	1	0	1	0	0	0	0	0	0	0	2
5	0	0	1	3	3	1	0	0	0	0	0	0	8
6	0	0	3	7	6	6	2	0	0	0	0	0	24
7	0	1	3	6	12	4	1	0	0	0	0	0	27
8	0	0	3	45	52	10	3	1	0	0	0	0	114
9	0	1	29	111	96	26	1	1	0	0	0	0	265
10	0	0	83	120	67	12	1	0	1	0	0	0	284
11	0	0	32	96	64	13	1	0	0	0	0	0	206
12	0	1	46	123	68	9	4	1	0	0	0	0	252
13	0	0	27	120	81	12	1	0	0	0	0	0	241
14	0	3	38	104	74	10	1	0	0	0	0	0	230
15	0	1	46	123	73	11	0	1	0	0	0	0	255
16	0	0	38	147	75	11	2	0	0	0	0	0	273
17	0	0	45	149	124	14	0	1	0	0	0	0	333
18	0	0	22	76	142	35	1	0	0	0	0	0	276
19	0	0	16	85	81	18	2	1	0	0	0	0	203
20	0	0	27	67	56	15	0	1	0	0	0	0	166
21	0	1	22	23	21	8	1	0	1	0	0	0	77
22	0	0	8	31	16	2	2	0	0	0	0	0	59
23	0	0	4	16	12	7	1	0	0	0	0	0	40
24	0	0	2	3	3	2	2	1	0	0	0	0	13
7-19	0	6	425	1299	997	181	17	6	1	0	0	0	2932
6-22	0	8	485	1426	1102	210	21	7	2	0	0	0	3261
6-24	0	8	491	1445	1117	219	24	8	2	0	0	0	3314
0-24	0	8	497	1460	1131	226	26	8	2	0	0	0	3358

Direction : EASTBOUND

Monday 09/09/2024	VEHICLE SPEED (MPH)												TOTAL
Hr Ending	0-10	11-20	21-30	31-35	36-40	41-45	46-50	51-55	56-60	61-70	71-80	81-120	
1	0	0	1	0	2	2	1	0	0	0	0	0	6
2	0	0	0	2	0	0	1	0	0	0	0	0	3
3	0	0	1	0	2	1	0	0	0	0	0	0	4
4	0	0	0	1	3	0	1	0	0	0	0	0	5
5	0	0	1	4	6	2	2	1	0	0	0	0	16
6	0	0	3	23	29	9	2	0	0	0	0	0	66
7	0	0	4	18	21	9	1	0	0	0	0	0	53
8	0	0	7	57	65	15	4	0	0	0	0	0	148
9	0	0	11	110	93	15	0	0	1	0	0	0	230
10	0	0	35	86	70	10	0	0	0	0	0	0	201
11	0	0	30	101	56	5	1	0	0	0	0	0	193
12	0	0	24	109	48	7	2	0	0	0	0	0	190
13	0	0	30	120	76	14	3	0	0	1	0	0	244
14	0	0	24	124	58	15	0	0	0	0	0	0	221
15	0	1	44	95	57	7	2	0	0	0	0	0	206
16	0	0	58	113	49	9	1	0	0	0	0	0	230
17	0	0	23	128	102	18	2	0	0	0	0	0	273
18	0	0	35	133	94	8	1	0	0	0	0	0	271
19	0	0	7	70	70	13	2	0	0	0	0	0	162
20	0	0	16	61	29	8	1	0	0	1	0	0	116
21	0	0	13	29	30	2	0	0	0	0	0	0	74
22	0	0	7	22	19	5	0	0	0	0	0	0	53
23	0	0	3	12	10	3	1	0	0	0	0	0	29
24	0	0	2	5	4	2	0	0	0	0	0	0	13
7-19	0	1	328	1246	838	136	18	0	1	1	0	0	2569
6-22	0	1	368	1376	937	160	20	0	1	2	0	0	2865
6-24	0	1	373	1393	951	165	21	0	1	2	0	0	2907
0-24	0	1	379	1423	993	179	28	1	1	2	0	0	3007

Automatic Classified Counts, Caernarfon

LOCATION: A4086 LLANBERIS ROAD

Direction : WESTBOUND

Tuesday 10/09/2024	VEHICLE CLASSIFICATION													TOTAL
Hr Ending	1	2	3	4	5	6	7	8	9	10	11	12	13	
1	7	0	0	0	0	0	0	0	0	0	0	0	0	7
2	2	0	0	0	0	0	0	0	0	0	0	0	0	2
3	3	0	0	0	0	0	0	0	0	0	0	0	0	3
4	4	0	0	0	0	0	0	0	0	0	0	0	0	4
5	5	3	0	0	0	0	0	0	0	0	0	0	0	8
6	14	3	0	0	2	0	0	0	0	0	0	1	0	20
7	19	10	0	0	0	0	0	0	0	0	0	4	0	33
8	92	37	1	0	3	0	0	0	1	0	0	4	0	138
9	202	59	0	0	2	0	0	0	0	0	0	5	0	268
10	200	51	0	0	0	0	0	0	0	0	0	8	0	259
11	166	37	0	1	0	0	0	0	0	0	0	4	0	208
12	219	43	1	0	3	0	0	0	0	0	0	4	0	270
13	217	39	1	0	2	0	0	0	0	0	0	4	0	263
14	198	33	0	0	1	0	0	0	0	0	1	3	0	236
15	192	41	1	0	1	0	0	0	0	0	0	4	0	239
16	212	41	0	0	0	0	0	0	0	0	0	3	0	256
17	246	40	0	0	1	0	0	0	0	0	0	6	0	293
18	241	21	0	0	0	0	0	0	0	0	0	1	0	263
19	160	22	0	0	0	0	0	0	0	0	0	3	0	185
20	117	8	0	0	0	0	0	0	0	0	0	1	0	126
21	92	9	0	0	0	0	0	0	0	0	0	1	0	102
22	46	2	0	0	0	0	0	0	0	0	0	0	0	48
23	26	2	0	0	0	0	0	0	0	0	0	0	0	28
24	16	1	0	0	0	0	0	0	0	0	0	0	0	17
7-19	2345	464	4	1	13	0	0	0	1	0	1	49	0	2878
6-22	2619	493	4	1	13	0	0	0	1	0	1	55	0	3187
6-24	2661	496	4	1	13	0	0	0	1	0	1	55	0	3232
0-24	2696	502	4	1	15	0	0	0	1	0	1	56	0	3276

Direction : EASTBOUND

Tuesday 10/09/2024	VEHICLE CLASSIFICATION													TOTAL
Hr Ending	1	2	3	4	5	6	7	8	9	10	11	12	13	
1	7	0	0	0	0	0	0	0	0	0	0	0	0	7
2	2	0	0	0	0	0	0	0	0	0	0	0	0	2
3	1	0	0	0	0	0	0	0	0	0	0	0	0	1
4	5	0	0	0	0	0	0	0	0	0	0	0	0	5
5	6	1	0	0	0	0	0	0	0	0	0	0	0	7
6	61	3	0	0	0	0	0	0	0	0	0	0	0	64
7	50	10	1	0	0	0	0	0	0	0	0	1	0	62
8	115	32	0	0	0	0	0	0	0	0	0	2	0	149
9	167	40	0	0	1	0	1	0	0	0	0	5	0	214
10	162	44	1	0	1	0	0	1	0	0	0	4	0	213
11	134	28	1	0	0	0	0	0	0	0	0	4	0	167
12	173	46	1	0	0	0	0	0	1	0	0	3	0	224
13	190	24	0	0	1	0	0	0	0	0	0	5	0	220
14	171	30	0	0	1	0	0	0	0	0	0	3	0	205
15	178	31	0	0	0	0	0	0	0	0	0	4	0	213
16	188	39	0	0	3	0	0	0	1	0	1	2	0	234
17	240	24	0	0	1	0	1	0	0	0	0	2	0	268
18	232	17	0	0	1	0	0	0	0	0	0	3	0	253
19	149	18	0	0	0	0	0	0	0	0	2	2	0	171
20	99	13	0	0	0	0	0	0	0	0	0	1	0	113
21	62	6	0	0	0	0	0	0	0	0	0	1	0	69
22	58	4	0	0	0	0	0	0	0	0	0	0	0	62
23	24	3	0	0	0	0	0	0	0	0	0	1	0	28
24	9	2	0	0	0	0	0	0	0	0	0	0	0	11
7-19	2099	373	3	0	9	0	2	1	2	0	3	39	0	2531
6-22	2368	406	4	0	9	0	2	1	2	0	3	42	0	2837
6-24	2401	411	4	0	9	0	2	1	2	0	3	43	0	2876
0-24	2483	415	4	0	9	0	2	1	2	0	3	43	0	2962

Automatic Classified Counts, Caernarfon

LOCATION: A4086 LLANBERIS ROAD

Direction : WESTBOUND

Tuesday 10/09/2024	VEHICLE SPEED (MPH)												TOTAL
Hr Ending	0-10	11-20	21-30	31-35	36-40	41-45	46-50	51-55	56-60	61-70	71-80	81-120	
1	0	0	1	1	3	1	1	0	0	0	0	0	7
2	0	0	1	1	0	0	0	0	0	0	0	0	2
3	0	0	1	1	0	0	1	0	0	0	0	0	3
4	0	0	0	1	1	2	0	0	0	0	0	0	4
5	0	0	0	6	2	0	0	0	0	0	0	0	8
6	0	0	3	5	7	2	3	0	0	0	0	0	20
7	0	0	3	7	19	4	0	0	0	0	0	0	33
8	0	0	16	52	56	10	4	0	0	0	0	0	138
9	0	0	32	143	78	15	0	0	0	0	0	0	268
10	0	0	44	129	74	11	1	0	0	0	0	0	259
11	0	1	47	112	40	8	0	0	0	0	0	0	208
12	0	1	47	143	66	12	1	0	0	0	0	0	270
13	0	0	49	135	70	8	1	0	0	0	0	0	263
14	0	1	42	113	70	9	0	0	1	0	0	0	236
15	0	1	41	107	75	13	2	0	0	0	0	0	239
16	0	1	40	108	90	16	1	0	0	0	0	0	256
17	0	0	20	129	110	27	6	1	0	0	0	0	293
18	0	0	18	77	122	38	8	0	0	0	0	0	263
19	0	0	19	58	76	25	6	0	0	1	0	0	185
20	0	1	20	36	55	13	1	0	0	0	0	0	126
21	0	0	10	46	33	12	1	0	0	0	0	0	102
22	0	0	2	26	13	6	1	0	0	0	0	0	48
23	0	0	1	10	12	5	0	0	0	0	0	0	28
24	0	0	2	6	6	3	0	0	0	0	0	0	17
7-19	0	5	415	1306	927	192	30	1	1	1	0	0	2878
6-22	0	6	450	1421	1047	227	33	1	1	1	0	0	3187
6-24	0	6	453	1437	1065	235	33	1	1	1	0	0	3232
0-24	0	6	459	1452	1078	240	38	1	1	1	0	0	3276

Direction : EASTBOUND

Tuesday 10/09/2024	VEHICLE SPEED (MPH)												TOTAL
Hr Ending	0-10	11-20	21-30	31-35	36-40	41-45	46-50	51-55	56-60	61-70	71-80	81-120	
1	0	0	0	4	2	1	0	0	0	0	0	0	7
2	0	0	1	0	0	1	0	0	0	0	0	0	2
3	0	0	0	0	0	0	0	1	0	0	0	0	1
4	0	0	0	2	3	0	0	0	0	0	0	0	5
5	0	0	0	1	3	3	0	0	0	0	0	0	7
6	0	1	1	15	36	10	1	0	0	0	0	0	64
7	0	0	6	15	23	15	3	0	0	0	0	0	62
8	0	0	14	64	54	10	6	1	0	0	0	0	149
9	0	0	23	96	75	19	1	0	0	0	0	0	214
10	0	1	28	112	61	11	0	0	0	0	0	0	213
11	0	0	31	81	47	7	1	0	0	0	0	0	167
12	0	0	49	113	56	5	1	0	0	0	0	0	224
13	0	0	28	125	58	9	0	0	0	0	0	0	220
14	0	0	23	103	73	6	0	0	0	0	0	0	205
15	0	2	29	120	52	9	1	0	0	0	0	0	213
16	0	0	32	114	73	14	1	0	0	0	0	0	234
17	0	0	25	133	94	13	3	0	0	0	0	0	268
18	0	0	10	119	103	17	3	1	0	0	0	0	253
19	0	0	22	84	53	9	2	1	0	0	0	0	171
20	0	0	13	55	39	5	1	0	0	0	0	0	113
21	0	0	14	27	22	4	1	1	0	0	0	0	69
22	0	0	15	18	22	4	3	0	0	0	0	0	62
23	0	0	4	11	10	3	0	0	0	0	0	0	28
24	0	0	4	4	1	1	1	0	0	0	0	0	11
7-19	0	3	314	1264	799	129	19	3	0	0	0	0	2531
6-22	0	3	362	1379	905	157	27	4	0	0	0	0	2837
6-24	0	3	370	1394	916	161	28	4	0	0	0	0	2876
0-24	0	4	372	1416	960	176	29	5	0	0	0	0	2962

Automatic Classified Counts, Caernarfon

LOCATION: A4086 LLANBERIS ROAD

Direction : WESTBOUND

Wednesday 11/09/2024	VEHICLE CLASSIFICATION													TOTAL
Hr Ending	1	2	3	4	5	6	7	8	9	10	11	12	13	
1	4	0	0	0	0	0	0	0	0	0	0	0	0	4
2	1	0	0	0	0	0	0	0	0	0	0	0	0	1
3	3	0	0	0	0	0	0	0	0	0	0	0	0	3
4	1	1	0	0	0	0	0	0	0	0	0	0	0	2
5	3	1	0	0	0	0	0	0	0	0	0	0	0	4
6	11	4	0	0	0	0	0	0	0	0	0	0	0	15
7	14	13	0	0	1	0	0	0	0	0	0	2	0	30
8	76	23	0	0	2	0	1	0	2	0	0	4	0	108
9	202	58	1	0	1	0	0	0	1	0	0	4	0	267
10	239	41	0	0	2	0	0	0	0	0	0	5	0	287
11	183	36	0	0	0	0	0	1	0	0	0	5	0	225
12	214	39	1	0	1	0	0	0	1	0	0	3	0	259
13	210	45	3	0	2	0	0	1	1	0	0	2	0	264
14	205	37	0	0	1	0	1	0	1	0	0	5	0	250
15	165	48	0	0	0	0	1	0	0	0	0	1	0	215
16	240	48	0	0	0	0	0	0	0	0	0	3	0	291
17	286	58	0	0	2	0	0	0	0	0	0	3	0	349
18	254	25	0	0	0	0	0	0	1	0	0	2	0	282
19	175	28	0	0	0	0	0	0	0	0	0	0	0	203
20	120	16	0	0	0	0	0	1	0	0	0	1	0	138
21	84	15	0	0	0	0	0	0	0	0	0	1	0	100
22	57	4	0	0	1	0	0	0	0	0	0	0	0	62
23	17	2	0	0	0	0	0	0	0	0	0	0	0	19
24	9	0	0	0	0	0	0	0	0	0	0	0	0	9
7-19	2449	486	5	0	11	0	3	2	7	0	0	37	0	3000
6-22	2724	534	5	0	13	0	3	3	7	0	0	41	0	3330
6-24	2750	536	5	0	13	0	3	3	7	0	0	41	0	3358
0-24	2773	542	5	0	13	0	3	3	7	0	0	41	0	3387

Direction : EASTBOUND

Wednesday 11/09/2024	VEHICLE CLASSIFICATION													TOTAL
Hr Ending	1	2	3	4	5	6	7	8	9	10	11	12	13	
1	8	0	0	0	0	0	0	0	0	0	0	0	0	8
2	3	1	0	0	0	0	0	0	0	0	0	0	0	4
3	4	1	0	0	0	0	0	0	0	0	0	0	0	5
4	7	1	0	0	0	0	0	0	0	0	0	0	0	8
5	12	1	0	0	0	0	0	0	0	0	0	0	0	13
6	65	0	0	0	0	0	0	0	0	0	0	0	0	65
7	44	10	0	0	0	0	0	0	0	0	0	1	0	55
8	145	34	0	0	1	0	0	0	1	0	0	1	0	182
9	154	44	1	0	2	0	0	0	0	0	0	3	0	204
10	154	27	0	0	1	0	0	0	0	0	0	3	0	185
11	166	20	1	0	1	0	0	0	0	0	0	4	0	192
12	141	27	0	0	2	0	0	0	0	0	0	4	0	174
13	199	38	3	0	1	0	0	0	0	0	0	3	0	244
14	173	31	0	0	0	0	1	0	0	0	0	1	0	206
15	194	32	0	0	0	0	0	0	0	0	0	2	0	228
16	233	29	0	0	1	0	1	0	0	0	0	1	0	265
17	233	35	0	0	0	0	0	0	0	0	0	2	0	270
18	245	20	0	0	0	0	0	0	0	0	0	3	0	268
19	164	16	0	0	0	0	0	0	0	0	0	0	0	180
20	109	12	0	1	0	0	0	0	0	0	0	2	0	124
21	56	7	0	0	0	0	0	0	0	0	0	1	0	64
22	56	4	0	0	0	0	0	0	0	0	0	0	0	60
23	26	2	0	0	1	0	0	0	0	0	0	1	0	30
24	11	0	0	0	0	0	0	0	0	0	0	0	0	11
7-19	2201	353	5	0	9	0	2	0	1	0	0	27	0	2598
6-22	2466	386	5	1	9	0	2	0	1	0	0	31	0	2901
6-24	2503	388	5	1	10	0	2	0	1	0	0	32	0	2942
0-24	2602	392	5	1	10	0	2	0	1	0	0	32	0	3045

Automatic Classified Counts, Caernarfon

LOCATION: A4086 LLANBERIS ROAD

Direction : WESTBOUND

Wednesday 11/09/2024	VEHICLE SPEED (MPH)												TOTAL
Hr Ending	0-10	11-20	21-30	31-35	36-40	41-45	46-50	51-55	56-60	61-70	71-80	81-120	
1	0	0	0	3	0	1	0	0	0	0	0	0	4
2	0	0	0	1	0	0	0	0	0	0	0	0	1
3	0	0	0	1	0	1	1	0	0	0	0	0	3
4	0	0	1	0	0	1	0	0	0	0	0	0	2
5	0	0	0	1	3	0	0	0	0	0	0	0	4
6	0	0	4	5	4	2	0	0	0	0	0	0	15
7	0	1	5	12	9	2	1	0	0	0	0	0	30
8	0	0	6	45	44	10	3	0	0	0	0	0	108
9	0	0	33	140	82	10	2	0	0	0	0	0	267
10	0	0	40	156	80	10	1	0	0	0	0	0	287
11	0	0	48	105	65	6	1	0	0	0	0	0	225
12	0	0	32	146	61	15	5	0	0	0	0	0	259
13	0	1	24	134	90	10	4	0	1	0	0	0	264
14	0	0	52	129	58	9	2	0	0	0	0	0	250
15	0	1	29	106	67	9	1	2	0	0	0	0	215
16	0	0	41	150	89	10	1	0	0	0	0	0	291
17	0	0	39	157	126	25	2	0	0	0	0	0	349
18	0	0	19	111	132	16	0	2	2	0	0	0	282
19	0	0	23	84	77	16	3	0	0	0	0	0	203
20	0	0	11	75	40	11	1	0	0	0	0	0	138
21	0	0	13	45	30	10	1	1	0	0	0	0	100
22	0	0	4	24	26	4	1	2	0	1	0	0	62
23	0	0	2	6	7	4	0	0	0	0	0	0	19
24	0	0	1	5	1	2	0	0	0	0	0	0	9
7-19	0	2	386	1463	971	146	25	4	3	0	0	0	3000
6-22	0	3	419	1619	1076	173	29	7	3	1	0	0	3330
6-24	0	3	422	1630	1084	179	29	7	3	1	0	0	3358
0-24	0	3	427	1641	1091	184	30	7	3	1	0	0	3387

Direction : EASTBOUND

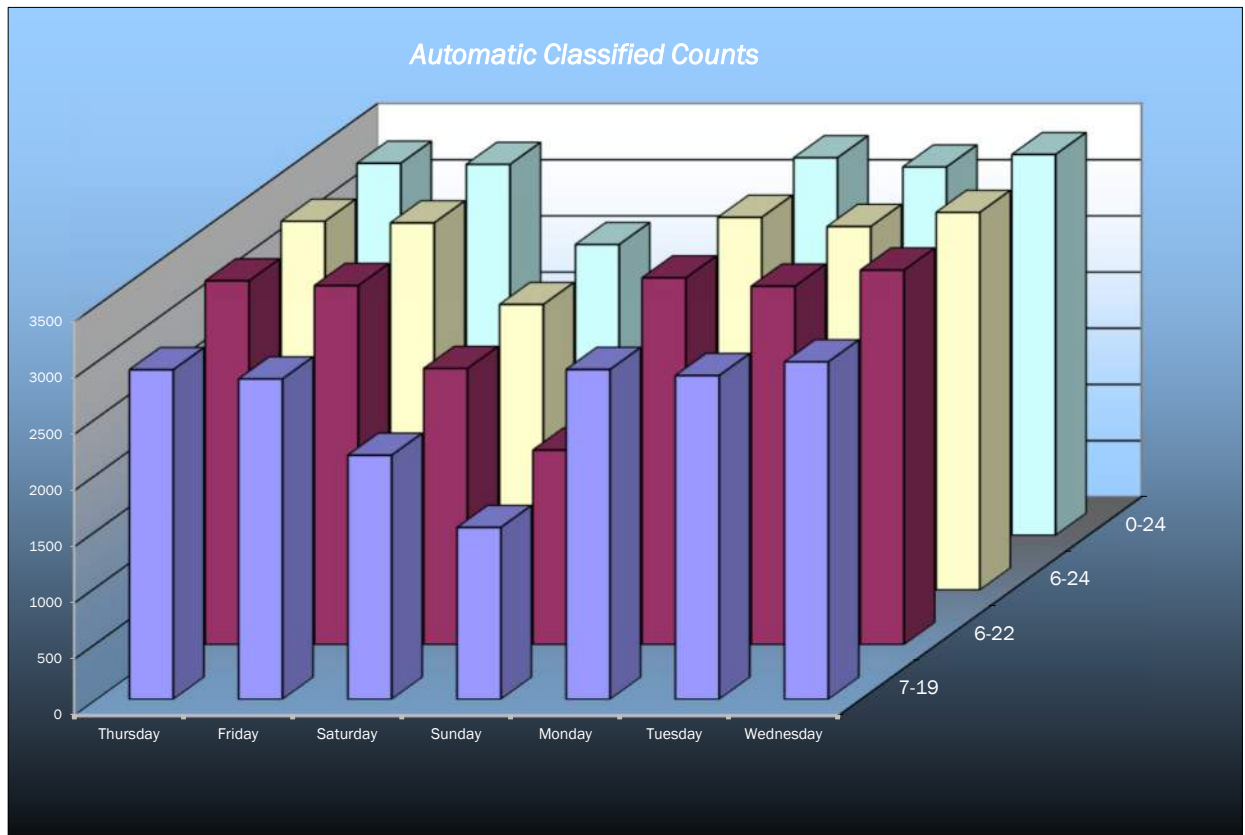
Wednesday 11/09/2024	VEHICLE SPEED (MPH)												TOTAL
Hr Ending	0-10	11-20	21-30	31-35	36-40	41-45	46-50	51-55	56-60	61-70	71-80	81-120	
1	0	0	1	2	3	2	0	0	0	0	0	0	8
2	0	0	1	1	1	0	1	0	0	0	0	0	4
3	0	0	1	0	3	1	0	0	0	0	0	0	5
4	0	0	2	1	4	1	0	0	0	0	0	0	8
5	0	0	0	6	5	1	1	0	0	0	0	0	13
6	0	1	6	23	22	9	3	1	0	0	0	0	65
7	0	0	5	22	17	7	4	0	0	0	0	0	55
8	0	0	22	80	62	16	2	0	0	0	0	0	182
9	0	0	14	92	85	12	1	0	0	0	0	0	204
10	0	0	22	112	46	5	0	0	0	0	0	0	185
11	0	1	32	100	51	7	0	0	1	0	0	0	192
12	0	0	30	95	38	10	1	0	0	0	0	0	174
13	0	0	37	112	82	11	2	0	0	0	0	0	244
14	0	0	26	97	72	10	1	0	0	0	0	0	206
15	0	0	35	118	67	6	2	0	0	0	0	0	228
16	0	0	52	120	80	12	1	0	0	0	0	0	265
17	0	0	33	133	87	13	4	0	0	0	0	0	270
18	0	0	24	135	89	18	1	1	0	0	0	0	268
19	0	0	9	82	73	14	2	0	0	0	0	0	180
20	0	0	14	54	44	7	2	3	0	0	0	0	124
21	0	0	6	32	19	6	0	0	1	0	0	0	64
22	0	0	5	24	24	6	0	1	0	0	0	0	60
23	0	0	2	11	12	3	2	0	0	0	0	0	30
24	0	0	1	4	3	3	0	0	0	0	0	0	11
7-19	0	1	336	1276	832	134	17	1	1	0	0	0	2598
6-22	0	1	366	1408	936	160	23	5	2	0	0	0	2901
6-24	0	1	369	1423	951	166	25	5	2	0	0	0	2942
0-24	0	2	380	1456	989	180	30	6	2	0	0	0	3045

Automatic Classified Counts, Caernarfon

LOCATION: A4086 LLANBERIS ROAD

Direction : WESTBOUND

VEHICLE FLOWS									
Hr Ending	Thursday 5-Sep-24	Friday 6-Sep-24	Saturday 7-Sep-24	Sunday 8-Sep-24	Monday 9-Sep-24	Tuesday 10-Sep-24	Wednesday 11-Sep-24	WEEKDAY AVERAGE	WEEK AVERAGE
1	3	8	22	16	8	7	4	6	10
2	3	3	9	14	1	2	1	2	5
3	1	2	5	10	1	3	3	2	4
4	1	1	1	7	2	4	2	2	3
5	5	1	6	4	8	8	4	5	5
6	17	20	5	8	24	20	15	19	16
7	42	35	21	20	27	33	30	33	30
8	135	136	46	34	114	138	108	126	102
9	285	230	119	50	265	268	267	263	212
10	278	254	219	91	284	259	287	272	239
11	248	246	188	132	206	208	225	227	208
12	227	248	214	170	252	270	259	251	234
13	274	275	199	214	241	263	264	263	247
14	258	230	218	159	230	236	250	241	226
15	209	275	211	168	255	239	215	239	225
16	272	253	183	162	273	256	291	269	241
17	275	255	206	136	333	293	349	301	264
18	281	269	203	117	276	263	282	274	242
19	188	177	163	94	203	185	203	191	173
20	125	143	117	82	166	126	138	140	128
21	85	97	86	55	77	102	100	92	86
22	53	70	62	45	59	48	62	58	57
23	25	49	50	13	40	28	19	32	32
24	19	22	33	15	13	17	9	16	18
7-19	2930	2848	2169	1527	2932	2878	3000	2918	2612
6-22	3235	3193	2455	1729	3261	3187	3330	3241	2913
6-24	3279	3264	2538	1757	3314	3232	3358	3289	2963
0-24	3309	3299	2586	1816	3358	3276	3387	3326	3004

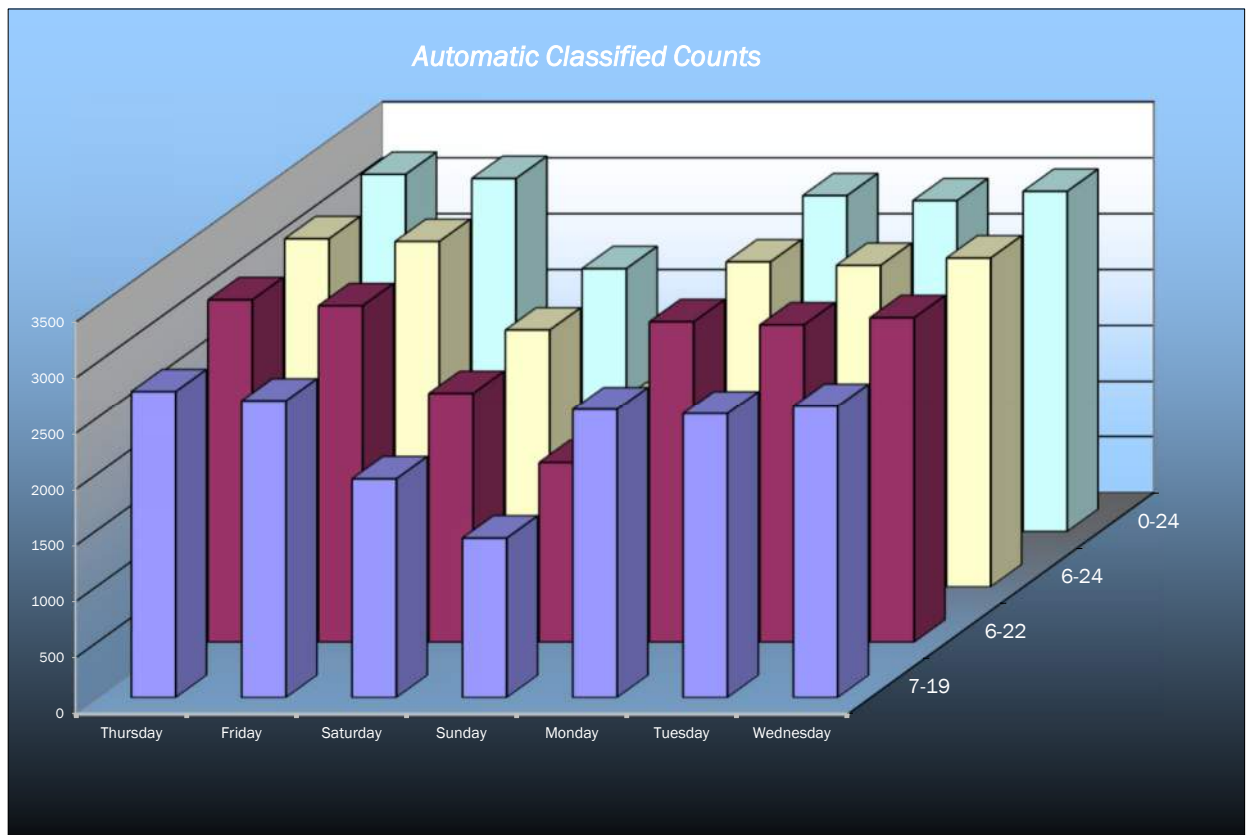


Automatic Classified Counts, Caernarfon

LOCATION: A4086 LLANBERIS ROAD

Direction : EASTBOUND

EASTBOUND									
Hr Ending	Thursday 5-Sep-24	Friday 6-Sep-24	Saturday 7-Sep-24	Sunday 8-Sep-24	Monday 9-Sep-24	Tuesday 10-Sep-24	Wednesday 11-Sep-24	WEEKDAY AVERAGE	WEEK AVERAGE
1	7	4	18	15	6	7	8	6	9
2	3	5	6	13	3	2	4	3	5
3	2	3	5	10	4	1	5	3	4
4	6	4	8	6	5	5	8	6	6
5	8	8	4	0	16	7	13	10	8
6	57	46	15	6	66	64	65	60	46
7	66	46	24	20	53	62	55	56	47
8	170	163	77	43	148	149	182	162	133
9	244	215	103	47	230	214	204	221	180
10	221	217	135	70	201	213	185	207	177
11	195	214	192	117	193	167	192	192	181
12	209	227	221	154	190	224	174	205	200
13	257	227	187	194	244	220	244	238	225
14	237	219	174	165	221	205	206	218	204
15	228	199	186	147	206	213	228	215	201
16	224	257	167	151	230	234	265	242	218
17	305	295	197	124	273	268	270	282	247
18	288	266	176	103	271	253	268	269	232
19	154	149	132	104	162	171	180	163	150
20	115	158	119	81	116	113	124	125	118
21	89	88	75	46	74	69	64	77	72
22	59	68	57	34	53	62	60	60	56
23	37	45	38	16	29	28	30	34	32
24	16	37	38	15	13	11	11	18	20
7-19	2732	2648	1947	1419	2569	2531	2598	2616	2349
6-22	3061	3008	2222	1600	2865	2837	2901	2934	2642
6-24	3114	3090	2298	1631	2907	2876	2942	2986	2694
0-24	3197	3160	2354	1681	3007	2962	3045	3074	2772



Automatic Classified Counts, Caernarfon

LOCATION: A4086 LLANBERIS ROAD

Direction : WESTBOUND

AVERAGE SPEEDS							
Hr Ending	Thursday 5-Sep-24	Friday 6-Sep-24	Saturday 7-Sep-24	Sunday 8-Sep-24	Monday 9-Sep-24	Tuesday 10-Sep-24	Wednesday 11-Sep-24
1	30.5	38.6	36.5	37.4	33.9	37.6	35.5
2	33.8	39.7	39.1	34.8	38.0	29.3	33.0
3	43.0	43.0	37.0	39.0	33.0	35.5	41.3
4	33.0	38.0	43.0	35.1	31.8	39.3	34.3
5	25.5	38.0	33.4	33.6	35.2	34.3	36.8
6	31.1	34.9	38.0	35.5	37.1	36.9	33.7
7	29.8	36.7	32.4	35.4	35.8	36.4	33.8
8	30.2	35.9	35.8	35.9	36.5	35.3	36.0
9	29.0	36.0	35.6	36.2	35.0	34.1	34.1
10	27.6	35.5	33.8	35.0	32.6	33.6	33.7
11	27.1	34.3	34.3	35.0	34.1	32.6	33.2
12	28.7	34.4	34.3	35.2	33.6	33.4	34.1
13	34.6	34.8	35.3	33.9	34.4	33.3	34.7
14	33.9	34.9	35.1	34.4	33.6	33.6	33.1
15	34.0	34.3	34.7	35.1	33.5	33.9	34.1
16	34.7	35.2	35.0	35.0	33.8	34.2	33.9
17	35.4	36.6	36.4	36.0	34.3	35.7	34.8
18	34.5	37.1	36.7	34.9	36.3	36.7	35.7
19	35.0	36.7	36.1	34.6	35.5	36.3	35.1
20	35.9	36.1	36.1	36.5	34.5	35.0	34.8
21	34.9	34.8	33.6	35.9	33.6	35.2	34.9
22	35.9	35.3	33.6	35.9	34.2	35.6	36.7
23	35.9	36.1	34.6	36.3	35.9	36.7	36.2
24	37.6	38.1	37.2	36.3	38.4	35.6	34.9
10-12	27.9	34.3	34.3	35.1	33.8	33.0	33.6
14-16	34.3	34.7	34.8	35.0	33.7	34.0	34.0
0-24	33.0	36.5	35.7	35.5	34.8	35.0	34.9

85TH PERCENTILE							
Hr Ending	Thursday 5-Sep-24	Friday 6-Sep-24	Saturday 7-Sep-24	Sunday 8-Sep-24	Monday 9-Sep-24	Tuesday 10-Sep-24	Wednesday 11-Sep-24
1	34.8	44.9	42.5	45.0	38.2	44.8	40.5
2	41.1	42.6	42.4	41.6	-	34.6	-
3	-	57.1	39.2	41.1	-	47.0	49.0
4	-	-	-	42.6	40.6	44.0	46.6
5	25.5	-	38.0	39.5	40.4	36.6	39.3
6	36.3	41.7	43.0	38.2	43.6	43.8	39.8
7	35.3	43.0	40.7	41.3	42.5	41.0	40.3
8	35.3	40.4	41.8	43.4	40.9	40.3	40.5
9	33.7	40.4	40.5	41.2	40.0	38.4	38.4
10	31.5	40.7	38.7	39.9	38.0	38.3	38.1
11	32.3	38.8	39.2	39.7	38.9	37.3	38.0
12	33.9	39.4	38.8	38.9	38.8	38.1	38.8
13	39.1	39.5	39.7	39.0	38.7	37.9	39.3
14	38.9	39.6	39.7	39.1	38.8	38.6	37.9
15	39.0	39.3	39.7	39.4	38.4	38.9	39.1
16	39.3	39.7	40.1	40.1	38.3	39.2	38.2
17	40.2	41.3	41.2	41.1	38.9	40.3	39.3
18	39.7	40.8	41.4	40.0	40.8	41.5	40.3
19	39.1	41.7	41.4	40.0	40.1	41.9	39.8
20	40.9	40.9	40.6	42.2	39.7	40.5	39.0
21	40.6	39.9	38.8	40.8	40.5	40.0	40.1
22	42.1	40.5	39.1	41.5	39.1	40.1	43.1
23	40.2	41.2	40.4	41.0	41.2	40.9	41.4
24	44.0	43.6	44.0	42.7	46.9	40.9	40.5
10-12	33.1	39.1	39.0	39.3	38.8	37.7	38.4
14-16	39.1	39.5	39.9	39.8	38.4	39.0	38.7
0-24	37.4	41.7	40.5	40.8	40.1	40.2	40.3

7 DAY AVERAGE SPEED	35.1
7 DAY AVERAGE 85th PERCENTILE	40.2

5 DAY OFF PEAK AVERAGE SPEED	33.3
5 DAY OFF PEAK AVERAGE 85th PERCENTILE	38.2

Automatic Classified Counts, Caernarfon

LOCATION: A4086 LLANBERIS ROAD

Direction : EASTBOUND

AVERAGE SPEEDS							
Hr Ending	Thursday 5-Sep-24	Friday 6-Sep-24	Saturday 7-Sep-24	Sunday 8-Sep-24	Monday 9-Sep-24	Tuesday 10-Sep-24	Wednesday 11-Sep-24
1	28.7	36.8	38.6	38.5	39.3	35.9	36.4
2	32.2	32.0	39.7	36.8	38.0	34.3	36.1
3	31.8	33.8	38.0	38.5	36.1	53.0	36.5
4	35.1	36.8	35.8	37.6	39.0	36.0	34.9
5	29.9	37.4	36.1	-	38.8	39.4	36.8
6	29.5	36.2	36.2	32.2	36.7	37.2	36.1
7	27.3	35.1	36.2	35.4	36.4	37.3	36.2
8	26.2	35.8	36.5	35.0	36.3	35.5	34.8
9	24.4	35.3	35.8	36.3	35.4	34.9	35.2
10	24.0	33.9	34.6	34.9	33.9	33.9	33.6
11	23.1	34.0	34.0	34.7	33.6	33.5	33.5
12	22.8	33.8	33.4	35.0	33.8	32.9	33.5
13	33.7	34.6	34.6	34.5	34.5	33.8	34.1
14	33.6	34.5	34.9	34.2	34.2	34.2	34.4
15	33.7	35.7	34.7	33.7	33.2	33.5	33.7
16	34.1	34.7	35.5	34.6	32.6	34.2	33.5
17	34.1	35.2	34.8	35.1	35.0	34.7	34.4
18	34.5	35.0	35.7	34.7	34.1	35.7	34.8
19	34.0	35.1	35.6	36.1	35.8	34.4	35.6
20	34.0	34.6	35.7	36.5	34.3	34.4	35.2
21	34.6	34.6	34.7	35.4	34.0	34.2	35.1
22	35.5	35.4	34.8	35.1	34.7	34.3	35.7
23	36.4	37.4	33.9	36.6	35.5	34.8	36.5
24	38.8	35.9	38.1	35.7	34.9	33.0	36.4
10-12	22.9	33.9	33.7	34.9	33.7	33.2	33.5
14-16	33.9	35.2	35.1	34.1	32.9	33.9	33.6
0-24	31.3	35.2	35.7	35.5	35.4	35.6	35.1

85TH PERCENTILE							
Hr Ending	Thursday 5-Sep-24	Friday 6-Sep-24	Saturday 7-Sep-24	Sunday 8-Sep-24	Monday 9-Sep-24	Tuesday 10-Sep-24	Wednesday 11-Sep-24
1	32.7	41.5	42.7	44.5	47.0	39.8	42.3
2	38.5	38.3	45.7	39.8	46.7	46.6	45.6
3	40.6	41.1	43.0	44.0	43.6	-	43.0
4	44.4	39.3	40.3	46.6	44.5	38.7	41.2
5	34.8	39.1	44.6	-	45.7	43.2	41.5
6	35.0	40.8	41.7	37.8	41.2	41.8	42.4
7	33.0	40.8	41.8	42.0	41.3	42.9	41.9
8	33.1	40.2	42.3	40.5	40.7	40.7	39.7
9	31.2	40.0	40.9	42.2	39.5	39.5	39.3
10	30.4	38.7	39.6	40.2	38.7	38.4	37.5
11	30.2	38.8	39.0	39.4	38.0	38.3	38.4
12	33.2	38.5	38.6	39.1	38.2	37.6	38.2
13	37.7	39.2	39.4	38.5	39.6	37.9	38.8
14	38.3	39.9	39.8	39.4	38.4	38.3	38.8
15	37.9	40.0	39.5	38.4	38.3	38.2	38.2
16	38.9	39.2	40.1	39.2	37.6	38.8	38.4
17	38.6	39.9	39.7	39.7	39.3	39.0	39.0
18	38.7	39.6	40.3	39.9	38.4	39.7	39.2
19	38.6	39.4	40.2	41.0	39.8	39.2	39.7
20	39.3	39.8	39.9	41.1	39.8	38.9	40.6
21	40.4	40.3	40.6	39.6	38.7	39.9	40.4
22	40.2	39.7	38.8	43.0	39.6	40.5	40.7
23	44.0	43.2	37.8	42.5	40.7	39.8	41.7
24	45.2	42.5	45.0	41.2	40.4	40.6	41.9
10-12	31.7	38.7	38.8	39.2	38.1	37.9	38.3
14-16	38.4	39.6	39.8	38.8	37.9	38.5	38.3
0-24	37.3	40.0	40.9	40.9	40.7	39.9	40.3

7 DAY AVERAGE SPEED	34.8
7 DAY AVERAGE 85th PERCENTILE	40.0

5 DAY OFF PEAK AVERAGE SPEED	32.7
5 DAY OFF PEAK AVERAGE 85th PERCENTILE	37.7

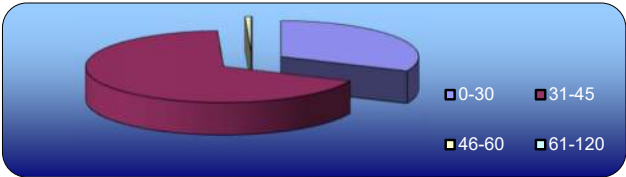
Automatic Classified Counts, Caernarfon

LOCATION: A4086 LLANBERIS ROAD

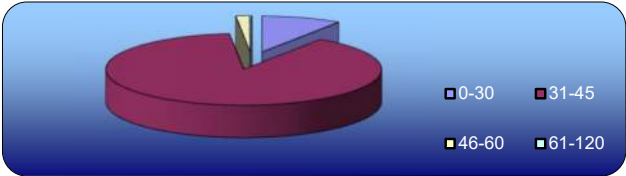
Direction : WESTBOUND

SPEED SUMMARY							
SPEED (MPH)	Thursday 5-Sep-24	Friday 6-Sep-24	Saturday 7-Sep-24	Sunday 8-Sep-24	Monday 9-Sep-24	Tuesday 10-Sep-24	Wednesday 11-Sep-24
0-30	1045	310	308	214	505	465	430
31-45	2240	2934	2239	1568	2817	2770	2916
46-60	24	53	38	34	36	40	40
61-120	0	2	1	0	0	1	1
TOTAL	3309	3299	2586	1816	3358	3276	3387

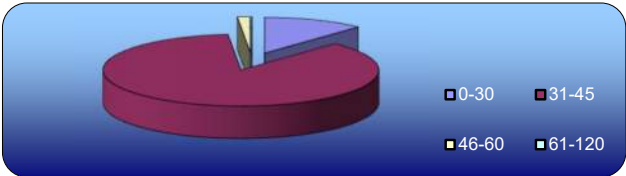
Thursday
5-Sep-24



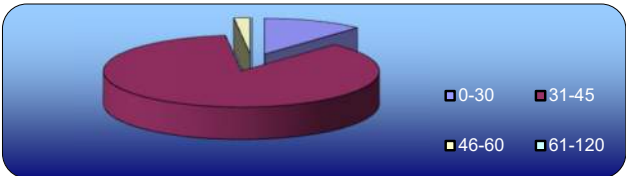
Friday
6-Sep-24



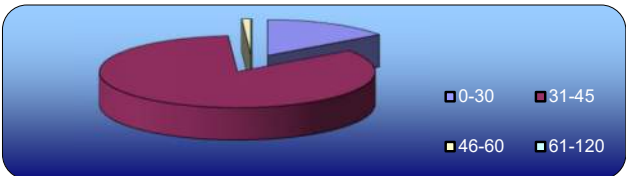
Saturday
7-Sep-24



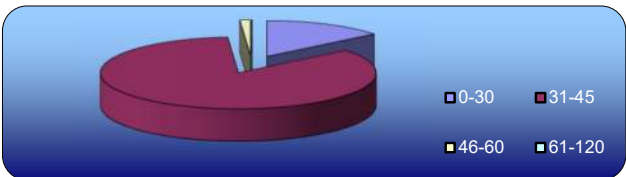
Sunday
8-Sep-24



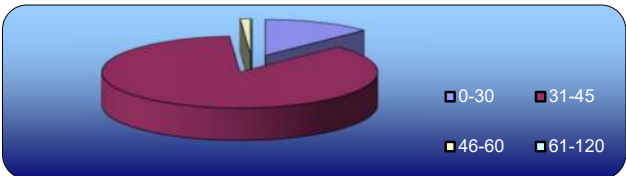
Monday
9-Sep-24



Tuesday
10-Sep-24



Wednesday
11-Sep-24



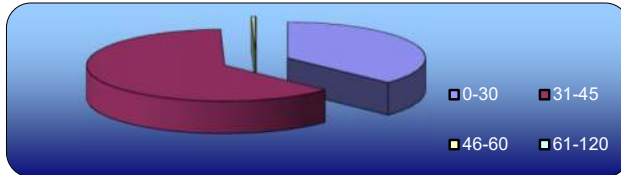
Automatic Classified Counts, Caernarfon

LOCATION: A4086 LLANBERIS ROAD

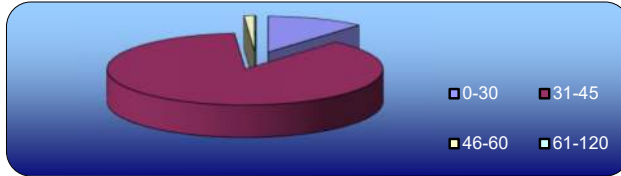
Direction : EASTBOUND

SPEED SUMMARY							
SPEED (MPH)	Thursday 5-Sep-24	Friday 6-Sep-24	Saturday 7-Sep-24	Sunday 8-Sep-24	Monday 9-Sep-24	Tuesday 10-Sep-24	Wednesday 11-Sep-24
0-30	1184	362	267	194	380	376	382
31-45	1998	2759	2050	1455	2595	2552	2625
46-60	14	38	36	32	30	34	38
61-120	1	1	1	0	2	0	0
TOTAL	3197	3160	2354	1681	3007	2962	3045

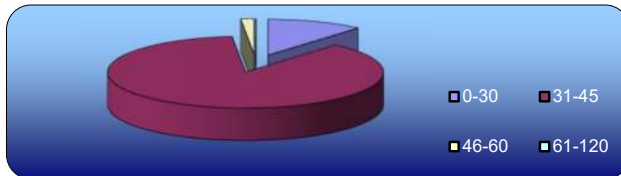
Thursday
5-Sep-24



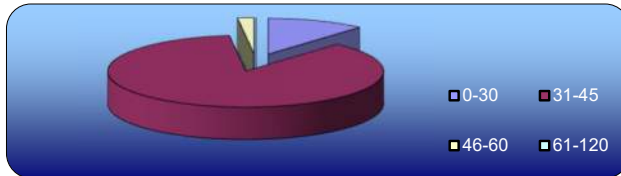
Friday
6-Sep-24



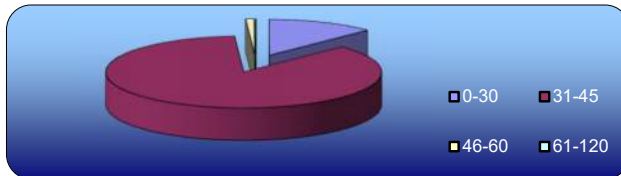
Saturday
7-Sep-24



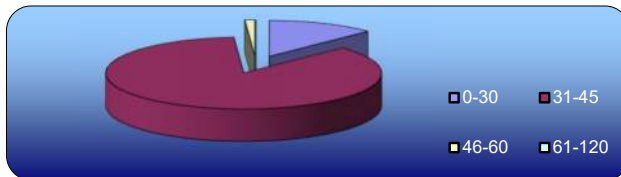
Sunday
8-Sep-24



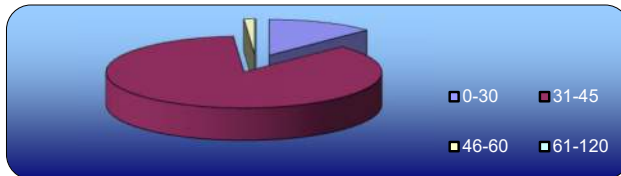
Monday
9-Sep-24



Tuesday
10-Sep-24



Wednesday
11-Sep-24

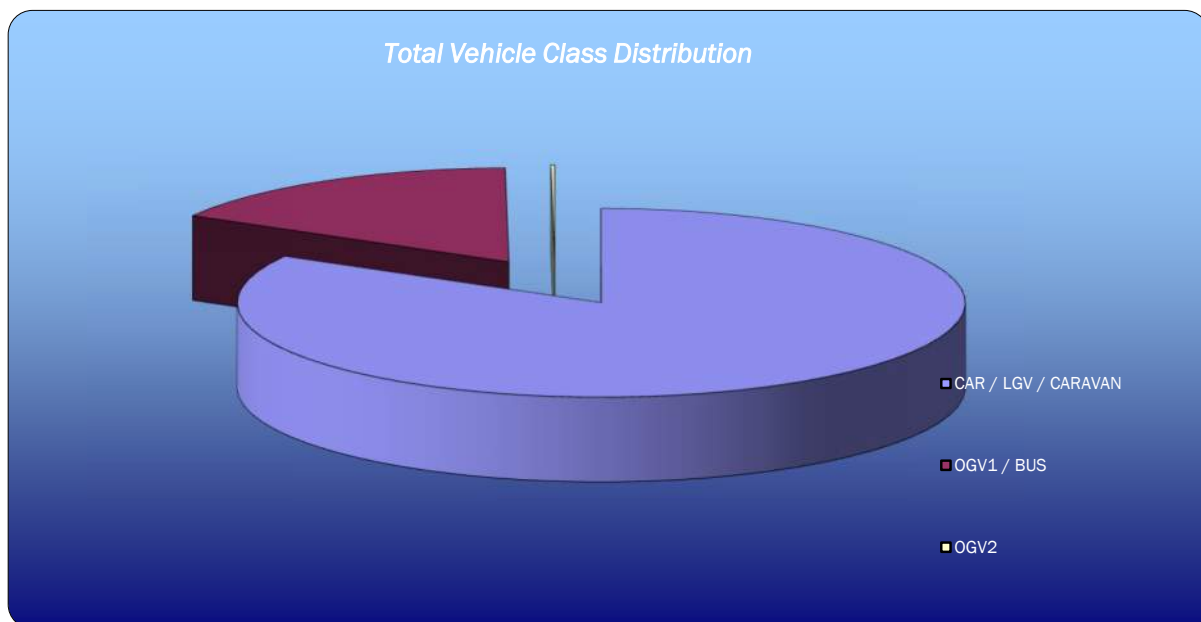


Automatic Classified Counts, Caernarfon

LOCATION: A4086 LLANBERIS ROAD

Direction : WESTBOUND

VEHICLE CLASSIFICATION				
	CAR / LGV / CARAVAN	OGV1 / BUS	OGV2	TOTAL
5-Sep-24				
7-19	2442	482	6	2930
6-22	2709	520	6	3235
6-24	2749	524	6	3279
0-24	2769	534	6	3309
6-Sep-24				
7-19	2358	485	5	2848
6-22	2654	534	5	3193
6-24	2720	539	5	3264
0-24	2746	548	5	3299
7-Sep-24				
7-19	1886	280	3	2169
6-22	2129	323	3	2455
6-24	2204	331	3	2538
0-24	2244	339	3	2586
8-Sep-24				
7-19	1338	187	2	1527
6-22	1521	206	2	1729
6-24	1549	206	2	1757
0-24	1595	219	2	1816
9-Sep-24				
7-19	2392	537	3	2932
6-22	2689	569	3	3261
6-24	2740	571	3	3314
0-24	2775	580	3	3358
10-Sep-24				
7-19	2345	530	3	2878
6-22	2619	565	3	3187
6-24	2661	568	3	3232
0-24	2696	577	3	3276
11-Sep-24				
7-19	2449	542	9	3000
6-22	2724	596	10	3330
6-24	2750	598	10	3358
0-24	2773	604	10	3387
AVERAGE				
7-19	2173	435	4	2612
6-22	2435	473	5	2913
6-24	2482	477	5	2963
0-24	2514	486	5	3004

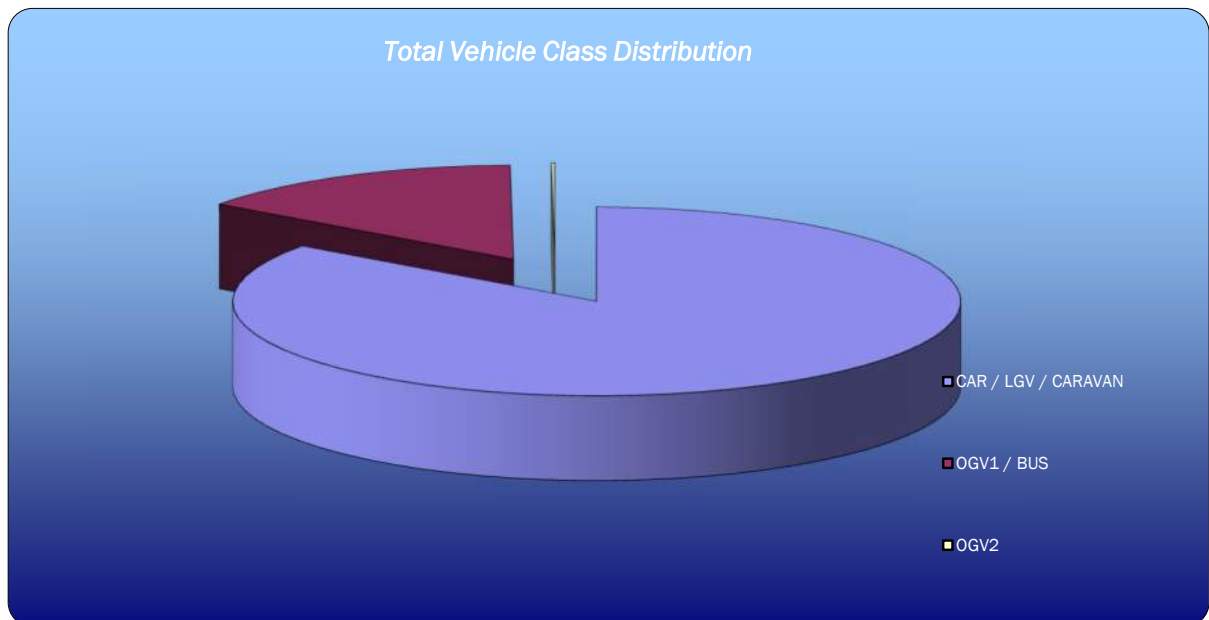


Automatic Classified Counts, Caernarfon

LOCATION: A4086 LLANBERIS ROAD

Direction : EASTBOUND

VEHICLE CLASSIFICATION				
	CAR / LGV / CARAVAN	OGV1 / BUS	OGV2	TOTAL
5-Sep-24				
7-19	2289	438	5	2732
6-22	2584	472	5	3061
6-24	2634	475	5	3114
0-24	2712	480	5	3197
6-Sep-24				
7-19	2238	407	3	2648
6-22	2552	452	4	3008
6-24	2624	461	5	3090
0-24	2691	464	5	3160
7-Sep-24				
7-19	1733	212	2	1947
6-22	1977	243	2	2222
6-24	2046	250	2	2298
0-24	2093	259	2	2354
8-Sep-24				
7-19	1267	151	1	1419
6-22	1428	171	1	1600
6-24	1457	173	1	1631
0-24	1497	183	1	1681
9-Sep-24				
7-19	2148	414	7	2569
6-22	2403	455	7	2865
6-24	2444	456	7	2907
0-24	2538	462	7	3007
10-Sep-24				
7-19	2099	426	6	2531
6-22	2368	463	6	2837
6-24	2401	469	6	2876
0-24	2483	473	6	2962
11-Sep-24				
7-19	2201	396	1	2598
6-22	2466	433	2	2901
6-24	2503	437	2	2942
0-24	2602	441	2	3045
AVERAGE				
7-19	1996	349	4	2349
6-22	2254	384	4	2642
6-24	2301	389	4	2694
0-24	2374	395	4	2772



S|C|P

APPENDIX B



K	MORE GREEN AREAS SHOWN & AMENITY SPACE FOR FLATS	30/04/25	GT
J	SECTIONS OF HIGHWAY SHOWN IN 'BROWN' COLOUR ADJUSTED TO LIGHT GREY IN FRONT OF HOUSES	29/04/25	GT
H	FLATS 15-20 MOVED UP AND ONE 4P28 HOUSE MOVED DOWN, ADJACENT TO PLOT 26. PLAY AREA MOVED OUT OF THE WATER MAIN EASEMENT	28/04/25	GT
G	WATERMAIN POSITION ADJUSTED	24/04/25	IO
F	AMENDED TEXT ANNOTATION OF ADJACENT LAND	16/04/25	GT
E	FARM GATE ADDED FOR ACCESS TO PHASE 2 LAND WITH STOCK PROOF FENCE EITHER SIDE OF GATE AND ALONG MAIN ROAD. 2.1M FENCE ADDED TO BOUNDARY WITH CIBYN INDUSTRIAL ESTATE.	16/04/25	GT
D	BINS & SHEDS ADDED, 1.2m LANDING DEPTH TO FRONT DOORS	11/04/25	GT
C	PLOT 12 & 13 SWITCHED, SUBSTATION PUSHED BACK, RAIN GARDEN REMOVED ADJACENT PLOT 8	27/03/25	GT
B	AMENDMENTS TO SITE LAYOUT FOLLOWING ADRA'S PREFERRED HOUSING MIX	03/03/25	GT
A	FOR WELSH GOVERNMENT SUBMISSION	09/12/24	GT
REV	DESCRIPTION	DATE	BY

PROJECT
**LLANBERIS ROAD,
CAERNARFON
for ADRA**

DRAWING TITLE
PROPOSED SITE LAYOUT

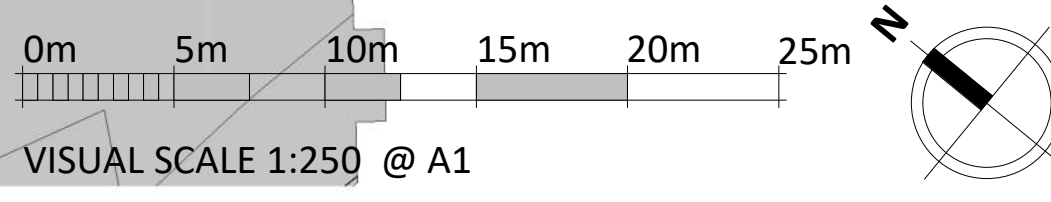
SCALE	DATE	DRAWN	CHECKED
1:250 @ A1	17/10/24	GT	SV
DRAWING STATUS	PLANNING		
JOB No	DRAWING No	REVISION	
C1139 015	K		

AG

AINSLEY GOMMON ARCHITECTS

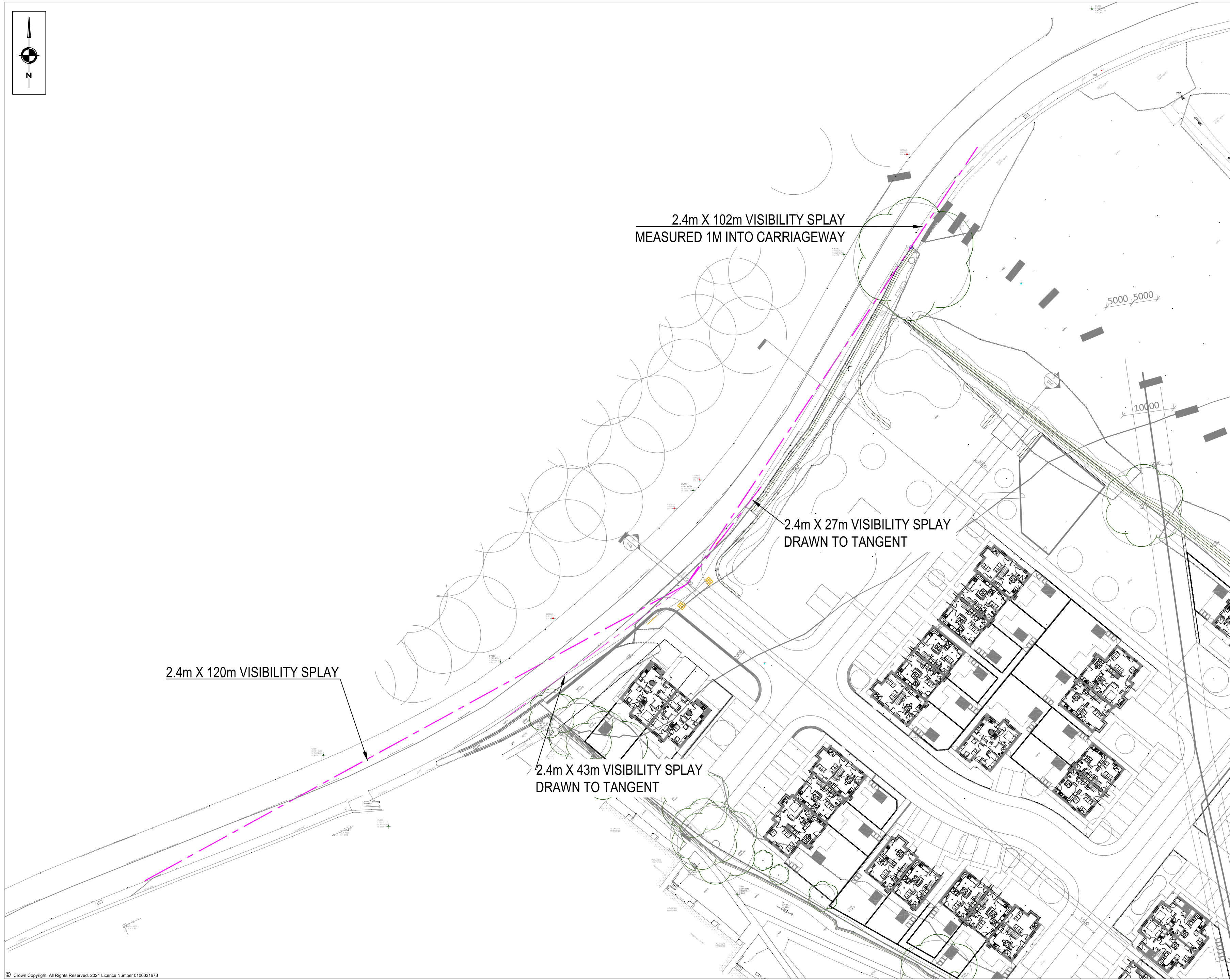
THE OLD POLICE STATION, 15 GLYNNE WAY, HAWARDEN, CH5 3NS
Tel: 01244 537 100 | wales@agarchitects.co.uk | www.agarchitects.co.uk
Ainsley Gommon Architects Ltd. Registered in England & Wales No. 4187948
Registered Office: 1 Price Street, Hamilton Square, Birmingham B4 6AA

PRINTED: 30/04/2025 15:09:35



S|C|P

APPENDIX C



NOTES

REVISIONS

REV	DESCRIPTION	DATE	BY
A	NEW SITE LAYOUT UNDERLAID	19.05.2025	OP

SCP

Transportation Planning : Infrastructure Design

Colwyn Chambers, 19 York Street, Manchester, M2 3BA, Tel 0161 832 4400, www.scptransport.co.uk, Email info@scptransport.co.uk

Client Name:

ADRA

Project Title:

LLANBERIS ROAD,
CAERNARFON

Drawing Title:

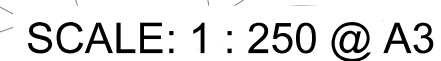
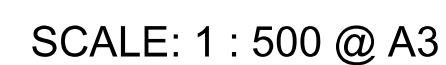
CHANGE IN SPEED LIMIT
LOCATION PLAN

Date: <div>23.09.2024</div>	Drawn By: <div>OP</div>
Scale: <div>1:500 @ A2</div>	Checked: <div>PT</div>
Status: <div>PLANNING</div>	Approved/ Unapproved: <div>UNAPPROVED</div>

Drawing No. <div>SCP/240824/D01</div>	Rev. <div>A</div>
---------------------------------------	-------------------

S|C|P

APPENDIX D



Large Refuse Vehicle (4 axle)	
Overall Length	11.347m
Overall Width	2.500m
Overall Body Height	3.751m
Min Body Ground Clearance	0.304m
Track Width	2.500m
Lock to lock time	6.00s
Wall to Wall Turning Radius	11.330m

REVISIONS

REV	DESCRIPTION	DATE	BY
A	NEW SITE LAYOUT UNDERLAID AND SWEEP PATH UPDATED	9.05.2025	C

S | C | P

Transportation Planning : Infrastructure Design

Colwyn Chambers, 19 York Street, Manchester, M2 3BA, Tel 0161 832 4400,
www.scptransport.co.uk, Email info@scptransport.co.uk

Client Name:	
--------------	--

ADRA

Project Title:

LLANBERIS ROAD,
CAERNARFON

Drawing Title:

SWEPT PATH ANALYSIS - LARGE REFUSE VEHICLE

Date:	23.09.2024	Drawn By:	OP
Scale:	AS STATED IN INSET	Checked:	PT
Status:	PLANNING	Approved/ Unapproved:	UNAPPROVED

Drawing No.

SCP/240824/ATR01

Rev.

Rev. **A**

S|C|P

APPENDIX E

TRIP RATE CALCULATION SELECTION PARAMETERS:

Land Use : 03 - RESIDENTIAL
Category : A - HOUSES PRIVATELY OWNED
MULTI-MODAL TOTAL VEHICLES

Selected regions and areas:

02	SOUTH EAST	
	CT CENTRAL BEDFORDSHIRE	1 days
	ES EAST SUSSEX	1 days
	HC HAMPSHIRE	4 days
	MW MEDWAY	1 days
	SC SURREY	1 days
03	SOUTH WEST	
	DC DORSET	2 days
04	EAST ANGLIA	
	NF NORFOLK	3 days
05	EAST MIDLANDS	
	NT NOTTINGHAMSHIRE	1 days
06	WEST MIDLANDS	
	WK WARWICKSHIRE	1 days
07	YORKSHIRE & NORTH LINCOLNSHIRE	
	NY NORTH YORKSHIRE	1 days
09	NORTH	
	DH DURHAM	1 days

This section displays the number of survey days per TRICS® sub-region in the selected set

SCP York Street Manchester

Licence No: 726001

Primary Filtering selection:

This data displays the chosen trip rate parameter and its selected range. Only sites that fall within the parameter range are included in the trip rate calculation.

Parameter: No of Dwellings
 Actual Range: 19 to 57 (units:)
 Range Selected by User: 18 to 72 (units:)

Parking Spaces Range: All Surveys Included

Parking Spaces per Dwelling Range: All Surveys Included

Bedrooms per Dwelling Range: All Surveys Included

Percentage of dwellings privately owned: All Surveys Included

Public Transport Provision:

Selection by: Include all surveys

Date Range: 01/01/16 to 27/03/24

This data displays the range of survey dates selected. Only surveys that were conducted within this date range are included in the trip rate calculation.

Selected survey days:

Monday	3 days
Tuesday	3 days
Wednesday	6 days
Thursday	1 days
Friday	4 days

This data displays the number of selected surveys by day of the week.

Selected survey types:

Manual count	17 days
Directional ATC Count	0 days

This data displays the number of manual classified surveys and the number of unclassified ATC surveys, the total adding up to the overall number of surveys in the selected set. Manual surveys are undertaken using staff, whilst ATC surveys are undertaken using machines.

Selected Locations:

Edge of Town	17
--------------	----

This data displays the number of surveys per main location category within the selected set. The main location categories consist of Free Standing, Edge of Town, Suburban Area, Neighbourhood Centre, Edge of Town Centre, Town Centre and Not Known.

Selected Location Sub Categories:

Residential Zone	16
No Sub Category	1

This data displays the number of surveys per location sub-category within the selected set. The location sub-categories consist of Commercial Zone, Industrial Zone, Development Zone, Residential Zone, Retail Zone, Built-Up Zone, Village, Out of Town, High Street and No Sub Category.

Inclusion of Servicing Vehicles Counts:

Servicing vehicles Included	5 days - Selected
Servicing vehicles Excluded	12 days - Selected

Secondary Filtering selection:Use Class:

C3	17 days
----	---------

This data displays the number of surveys per Use Class classification within the selected set. The Use Classes Order (England) 2020 has been used for this purpose, which can be found within the Library module of TRICS®.

Population within 500m Range:

All Surveys Included

SCP York Street Manchester

Licence No: 726001

Secondary Filtering selection (Cont.):Population within 1 mile:

1,001 to 5,000	1 days
5,001 to 10,000	6 days
10,001 to 15,000	7 days
15,001 to 20,000	2 days
20,001 to 25,000	1 days

This data displays the number of selected surveys within stated 1-mile radii of population.

Population within 5 miles:

5,001 to 25,000	2 days
25,001 to 50,000	3 days
50,001 to 75,000	2 days
75,001 to 100,000	1 days
100,001 to 125,000	1 days
125,001 to 250,000	7 days
250,001 to 500,000	1 days

This data displays the number of selected surveys within stated 5-mile radii of population.

Car ownership within 5 miles:

0.6 to 1.0	4 days
1.1 to 1.5	12 days
1.6 to 2.0	1 days

This data displays the number of selected surveys within stated ranges of average cars owned per residential dwelling, within a radius of 5-miles of selected survey sites.

Travel Plan:

Yes	11 days
No	6 days

This data displays the number of surveys within the selected set that were undertaken at sites with Travel Plans in place, and the number of surveys that were undertaken at sites without Travel Plans.

PTAL Rating:

No PTAL Present	17 days
-----------------	---------

This data displays the number of selected surveys with PTAL Ratings.

SCP York Street Manchester

Licence No: 726001

LIST OF SITES relevant to selection parameters

1	CT-03-A-01	MIXED HOUSES	CENTRAL BEDFORDSHIRE
	ARLESEY ROAD		
	STOTFOLD		
	Edge of Town		
	Residential Zone		
	Total No of Dwellings:	46	
	Survey date: WEDNESDAY	22/06/22	Survey Type: MANUAL
2	DC-03-A-09	MIXED HOUSES	DORSET
	A350		
	SHAFTESBURY		
	Edge of Town		
	No Sub Category		
	Total No of Dwellings:	50	
	Survey date: FRIDAY	19/11/21	Survey Type: MANUAL
3	DC-03-A-10	MIXED HOUSES	DORSET
	ADDISON CLOSE		
	GILLINGHAM		
	Edge of Town		
	Residential Zone		
	Total No of Dwellings:	26	
	Survey date: WEDNESDAY	09/11/22	Survey Type: MANUAL
4	DH-03-A-03	SEMI-DETACHED & TERRACED	DURHAM
	PILGRIMS WAY		
	DURHAM		
	Edge of Town		
	Residential Zone		
	Total No of Dwellings:	57	
	Survey date: FRIDAY	19/10/18	Survey Type: MANUAL
5	ES-03-A-09	DETACHED & SEMI-DETACHED	EAST SUSSEX
	THE FAIRWAY		
	NEWHAVEN		
	Edge of Town		
	Residential Zone		
	Total No of Dwellings:	47	
	Survey date: MONDAY	13/03/23	Survey Type: MANUAL
6	HC-03-A-21	TERRACED & SEMI-DETACHED	HAMPSHIRE
	PRIESTLEY ROAD		
	BASINGSTOKE		
	HOUNDMILLS		
	Edge of Town		
	Residential Zone		
	Total No of Dwellings:	39	
	Survey date: TUESDAY	13/11/18	Survey Type: MANUAL
7	HC-03-A-22	MIXED HOUSES	HAMPSHIRE
	BOW LAKE GARDENS		
	NEAR EASTLEIGH		
	BISHOPSTOKE		
	Edge of Town		
	Residential Zone		
	Total No of Dwellings:	40	
	Survey date: WEDNESDAY	31/10/18	Survey Type: MANUAL
8	HC-03-A-31	MIXED HOUSES & FLATS	HAMPSHIRE
	KILN ROAD		
	LIPHOOK		
	Edge of Town		
	Residential Zone		
	Total No of Dwellings:	44	
	Survey date: FRIDAY	07/10/22	Survey Type: MANUAL

SCP York Street Manchester

Licence No: 726001

LIST OF SITES relevant to selection parameters (Cont.)

9	HC-03-A-37	MIXED HOUSES		HAMPSHIRE
	REDFIELDS LANE			
	FLEET			
	CHURCH CROOKHAM			
	Edge of Town			
	Residential Zone			
	Total No of Dwellings:	50		
	Survey date: WEDNESDAY	27/03/24		Survey Type: MANUAL
10	MW-03-A-02	MIXED HOUSES		MEDWAY
	OTTERHAM QUAY LANE			
	RAINHAM			
	Edge of Town			
	Residential Zone			
	Total No of Dwellings:	19		
	Survey date: MONDAY	06/06/22		Survey Type: MANUAL
11	NF-03-A-05	MIXED HOUSES		NORFOLK
	HEATH DRIVE			
	HOLT			
	Edge of Town			
	Residential Zone			
	Total No of Dwellings:	40		
	Survey date: THURSDAY	19/09/19		Survey Type: MANUAL
12	NF-03-A-25	MIXED HOUSES & FLATS		NORFOLK
	WOODFARM LANE			
	GORLESTON-ON-SEA			
	Edge of Town			
	Residential Zone			
	Total No of Dwellings:	55		
	Survey date: TUESDAY	21/09/21		Survey Type: MANUAL
13	NF-03-A-37	MIXED HOUSES		NORFOLK
	GREENFIELDS ROAD			
	DEREHAM			
	Edge of Town			
	Residential Zone			
	Total No of Dwellings:	44		
	Survey date: TUESDAY	27/09/22		Survey Type: MANUAL
14	NT-03-A-08	DETACHED HOUSES		NOTTINGHAMSHIRE
	WIGHAY ROAD			
	HUCKNALL			
	Edge of Town			
	Residential Zone			
	Total No of Dwellings:	36		
	Survey date: MONDAY	18/10/21		Survey Type: MANUAL
15	NY-03-A-14	DETACHED & BUNGALOWS		NORTH YORKSHIRE
	PALACE ROAD			
	RIPON			
	Edge of Town			
	Residential Zone			
	Total No of Dwellings:	45		
	Survey date: WEDNESDAY	18/05/22		Survey Type: MANUAL
16	SC-03-A-07	MIXED HOUSES		SURREY
	FOLLY HILL			
	FARNHAM			
	Edge of Town			
	Residential Zone			
	Total No of Dwellings:	41		
	Survey date: WEDNESDAY	11/05/22		Survey Type: MANUAL

LIST OF SITES relevant to selection parameters (Cont.)

17	WK-03-A-04	DETACHED HOUSES	WARWICKSHIRE
	DALEHOUSE LANE		
	KENILWORTH		
	Edge of Town		
	Residential Zone		
	Total No of Dwellings:	49	
	Survey date: FRIDAY	27/09/19	Survey Type: MANUAL

This section provides a list of all survey sites and days in the selected set. For each individual survey site, it displays a unique site reference code and site address, the selected trip rate calculation parameter and its value, the day of the week and date of each survey, and whether the survey was a manual classified count or an ATC count.

SCP York Street Manchester

Licence No: 726001

TRIP RATE for Land Use 03 - RESIDENTIAL/A - HOUSES PRIVATELY OWNED

MULTI-MODAL TOTAL VEHICLES**Calculation factor: 1 DWELLS****BOLD print indicates peak (busiest) period**

Total People to Total Vehicles ratio (all time periods and directions): 1.59

Time Range	ARRIVALS			DEPARTURES			TOTALS		
	No. Days	Ave. DWELLS	Trip Rate	No. Days	Ave. DWELLS	Trip Rate	No. Days	Ave. DWELLS	Trip Rate
00:00 - 01:00									
01:00 - 02:00									
02:00 - 03:00									
03:00 - 04:00									
04:00 - 05:00									
05:00 - 06:00									
06:00 - 07:00									
07:00 - 08:00	17	43	0.089	17	43	0.280	17	43	0.369
08:00 - 09:00	17	43	0.206	17	43	0.378	17	43	0.584
09:00 - 10:00	17	43	0.158	17	43	0.203	17	43	0.361
10:00 - 11:00	17	43	0.140	17	43	0.180	17	43	0.320
11:00 - 12:00	17	43	0.161	17	43	0.172	17	43	0.333
12:00 - 13:00	17	43	0.187	17	43	0.205	17	43	0.392
13:00 - 14:00	17	43	0.188	17	43	0.158	17	43	0.346
14:00 - 15:00	17	43	0.170	17	43	0.218	17	43	0.388
15:00 - 16:00	17	43	0.305	17	43	0.195	17	43	0.500
16:00 - 17:00	17	43	0.293	17	43	0.194	17	43	0.487
17:00 - 18:00	17	43	0.343	17	43	0.202	17	43	0.545
18:00 - 19:00	17	43	0.261	17	43	0.157	17	43	0.418
19:00 - 20:00									
20:00 - 21:00									
21:00 - 22:00									
22:00 - 23:00									
23:00 - 24:00									
Total Rates:			2.501			2.542			5.043

This section displays the trip rate results based on the selected set of surveys and the selected count type (shown just above the table). It is split by three main columns, representing arrivals trips, departures trips, and total trips (arrivals plus departures). Within each of these main columns are three sub-columns. These display the number of survey days where count data is included (per time period), the average value of the selected trip rate calculation parameter (per time period), and the trip rate result (per time period). Total trip rates (the sum of the column) are also displayed at the foot of the table.

To obtain a trip rate, the average (mean) trip rate parameter value (TRP) is first calculated for all selected survey days that have count data available for the stated time period. The average (mean) number of arrivals, departures or totals (whichever applies) is also calculated (COUNT) for all selected survey days that have count data available for the stated time period. Then, the average count is divided by the average trip rate parameter value, and multiplied by the stated calculation factor (shown just above the table and abbreviated here as FACT). So, the method is: $COUNT/TRP*FACT$. Trip rates are then rounded to 3 decimal places.

The survey data, graphs and all associated supporting information, contained within the TRICS Database are published by TRICS Consortium Limited ("the Company") and the Company claims copyright and database rights in this published work. The Company authorises those who possess a current TRICS licence to access the TRICS Database and copy the data contained within the TRICS Database for the licence holders' use only. Any resulting copy must retain all copyrights and other proprietary notices, and any disclaimer contained thereon.

The Company accepts no responsibility for loss which may arise from reliance on data contained in the TRICS Database. [No warranty of any kind, express or implied, is made as to the data contained in the TRICS Database.]

Parameter summary

Trip rate parameter range selected:	19 - 57 (units:)
Survey date date range:	01/01/16 - 27/03/24
Number of weekdays (Monday-Friday):	17
Number of Saturdays:	0
Number of Sundays:	0
Surveys automatically removed from selection:	0
Surveys manually removed from selection:	0

This section displays a quick summary of some of the data filtering selections made by the TRICS® user. The trip rate calculation parameter range of all selected surveys is displayed first, followed by the range of minimum and maximum survey dates selected by the user. Then, the total number of selected weekdays and weekend days in the selected set of surveys are shown. Finally, the number of survey days that have been manually removed from the selected set outside of the standard filtering procedure are displayed.

SCP York Street Manchester

Licence No: 726001

TRIP RATE for Land Use 03 - RESIDENTIAL/A - HOUSES PRIVATELY OWNED

MULTI-MODAL CYCLISTS**Calculation factor: 1 DWELLS****BOLD print indicates peak (busiest) period**

Time Range	ARRIVALS			DEPARTURES			TOTALS		
	No. Days	Ave. DWELLS	Trip Rate	No. Days	Ave. DWELLS	Trip Rate	No. Days	Ave. DWELLS	Trip Rate
00:00 - 01:00									
01:00 - 02:00									
02:00 - 03:00									
03:00 - 04:00									
04:00 - 05:00									
05:00 - 06:00									
06:00 - 07:00									
07:00 - 08:00	17	43	0.005	17	43	0.007	17	43	0.012
08:00 - 09:00	17	43	0.008	17	43	0.008	17	43	0.016
09:00 - 10:00	17	43	0.008	17	43	0.005	17	43	0.013
10:00 - 11:00	17	43	0.007	17	43	0.010	17	43	0.017
11:00 - 12:00	17	43	0.000	17	43	0.003	17	43	0.003
12:00 - 13:00	17	43	0.003	17	43	0.001	17	43	0.004
13:00 - 14:00	17	43	0.003	17	43	0.004	17	43	0.007
14:00 - 15:00	17	43	0.001	17	43	0.001	17	43	0.002
15:00 - 16:00	17	43	0.004	17	43	0.012	17	43	0.016
16:00 - 17:00	17	43	0.008	17	43	0.001	17	43	0.009
17:00 - 18:00	17	43	0.007	17	43	0.008	17	43	0.015
18:00 - 19:00	17	43	0.008	17	43	0.005	17	43	0.013
19:00 - 20:00									
20:00 - 21:00									
21:00 - 22:00									
22:00 - 23:00									
23:00 - 24:00									
Total Rates:			0.062			0.065			0.127

This section displays the trip rate results based on the selected set of surveys and the selected count type (shown just above the table). It is split by three main columns, representing arrivals trips, departures trips, and total trips (arrivals plus departures). Within each of these main columns are three sub-columns. These display the number of survey days where count data is included (per time period), the average value of the selected trip rate calculation parameter (per time period), and the trip rate result (per time period). Total trip rates (the sum of the column) are also displayed at the foot of the table.

To obtain a trip rate, the average (mean) trip rate parameter value (TRP) is first calculated for all selected survey days that have count data available for the stated time period. The average (mean) number of arrivals, departures or totals (whichever applies) is also calculated (COUNT) for all selected survey days that have count data available for the stated time period. Then, the average count is divided by the average trip rate parameter value, and multiplied by the stated calculation factor (shown just above the table and abbreviated here as FACT). So, the method is: $COUNT/TRP*FACT$. Trip rates are then rounded to 3 decimal places.

SCP York Street Manchester

Licence No: 726001

TRIP RATE for Land Use 03 - RESIDENTIAL/A - HOUSES PRIVATELY OWNED

MULTI-MODAL PEDESTRIANS**Calculation factor: 1 DWELLS****BOLD print indicates peak (busiest) period**

Time Range	ARRIVALS			DEPARTURES			TOTALS		
	No. Days	Ave. DWELLS	Trip Rate	No. Days	Ave. DWELLS	Trip Rate	No. Days	Ave. DWELLS	Trip Rate
00:00 - 01:00									
01:00 - 02:00									
02:00 - 03:00									
03:00 - 04:00									
04:00 - 05:00									
05:00 - 06:00									
06:00 - 07:00									
07:00 - 08:00	17	43	0.014	17	43	0.034	17	43	0.048
08:00 - 09:00	17	43	0.043	17	43	0.118	17	43	0.161
09:00 - 10:00	17	43	0.047	17	43	0.033	17	43	0.080
10:00 - 11:00	17	43	0.023	17	43	0.037	17	43	0.060
11:00 - 12:00	17	43	0.027	17	43	0.023	17	43	0.050
12:00 - 13:00	17	43	0.030	17	43	0.025	17	43	0.055
13:00 - 14:00	17	43	0.019	17	43	0.019	17	43	0.038
14:00 - 15:00	17	43	0.033	17	43	0.033	17	43	0.066
15:00 - 16:00	17	43	0.087	17	43	0.044	17	43	0.131
16:00 - 17:00	17	43	0.048	17	43	0.034	17	43	0.082
17:00 - 18:00	17	43	0.040	17	43	0.054	17	43	0.094
18:00 - 19:00	17	43	0.065	17	43	0.043	17	43	0.108
19:00 - 20:00									
20:00 - 21:00									
21:00 - 22:00									
22:00 - 23:00									
23:00 - 24:00									
Total Rates:			0.476			0.497			0.973

This section displays the trip rate results based on the selected set of surveys and the selected count type (shown just above the table). It is split by three main columns, representing arrivals trips, departures trips, and total trips (arrivals plus departures). Within each of these main columns are three sub-columns. These display the number of survey days where count data is included (per time period), the average value of the selected trip rate calculation parameter (per time period), and the trip rate result (per time period). Total trip rates (the sum of the column) are also displayed at the foot of the table.

To obtain a trip rate, the average (mean) trip rate parameter value (TRP) is first calculated for all selected survey days that have count data available for the stated time period. The average (mean) number of arrivals, departures or totals (whichever applies) is also calculated (COUNT) for all selected survey days that have count data available for the stated time period. Then, the average count is divided by the average trip rate parameter value, and multiplied by the stated calculation factor (shown just above the table and abbreviated here as FACT). So, the method is: $COUNT/TRP*FACT$. Trip rates are then rounded to 3 decimal places.

SCP York Street Manchester

Licence No: 726001

TRIP RATE for Land Use 03 - RESIDENTIAL/A - HOUSES PRIVATELY OWNED

MULTI-MODAL PUBLIC TRANSPORT USERS**Calculation factor: 1 DWELLS****BOLD print indicates peak (busiest) period**

Time Range	ARRIVALS			DEPARTURES			TOTALS		
	No. Days	Ave. DWELLS	Trip Rate	No. Days	Ave. DWELLS	Trip Rate	No. Days	Ave. DWELLS	Trip Rate
00:00 - 01:00									
01:00 - 02:00									
02:00 - 03:00									
03:00 - 04:00									
04:00 - 05:00									
05:00 - 06:00									
06:00 - 07:00									
07:00 - 08:00	17	43	0.000	17	43	0.029	17	43	0.029
08:00 - 09:00	17	43	0.000	17	43	0.023	17	43	0.023
09:00 - 10:00	17	43	0.008	17	43	0.012	17	43	0.020
10:00 - 11:00	17	43	0.010	17	43	0.012	17	43	0.022
11:00 - 12:00	17	43	0.007	17	43	0.008	17	43	0.015
12:00 - 13:00	17	43	0.012	17	43	0.007	17	43	0.019
13:00 - 14:00	17	43	0.004	17	43	0.005	17	43	0.009
14:00 - 15:00	17	43	0.007	17	43	0.001	17	43	0.008
15:00 - 16:00	17	43	0.015	17	43	0.003	17	43	0.018
16:00 - 17:00	17	43	0.025	17	43	0.000	17	43	0.025
17:00 - 18:00	17	43	0.018	17	43	0.003	17	43	0.021
18:00 - 19:00	17	43	0.016	17	43	0.001	17	43	0.017
19:00 - 20:00									
20:00 - 21:00									
21:00 - 22:00									
22:00 - 23:00									
23:00 - 24:00									
Total Rates:			0.122			0.104			0.226

This section displays the trip rate results based on the selected set of surveys and the selected count type (shown just above the table). It is split by three main columns, representing arrivals trips, departures trips, and total trips (arrivals plus departures). Within each of these main columns are three sub-columns. These display the number of survey days where count data is included (per time period), the average value of the selected trip rate calculation parameter (per time period), and the trip rate result (per time period). Total trip rates (the sum of the column) are also displayed at the foot of the table.

To obtain a trip rate, the average (mean) trip rate parameter value (TRP) is first calculated for all selected survey days that have count data available for the stated time period. The average (mean) number of arrivals, departures or totals (whichever applies) is also calculated (COUNT) for all selected survey days that have count data available for the stated time period. Then, the average count is divided by the average trip rate parameter value, and multiplied by the stated calculation factor (shown just above the table and abbreviated here as FACT). So, the method is: $COUNT/TRP*FACT$. Trip rates are then rounded to 3 decimal places.