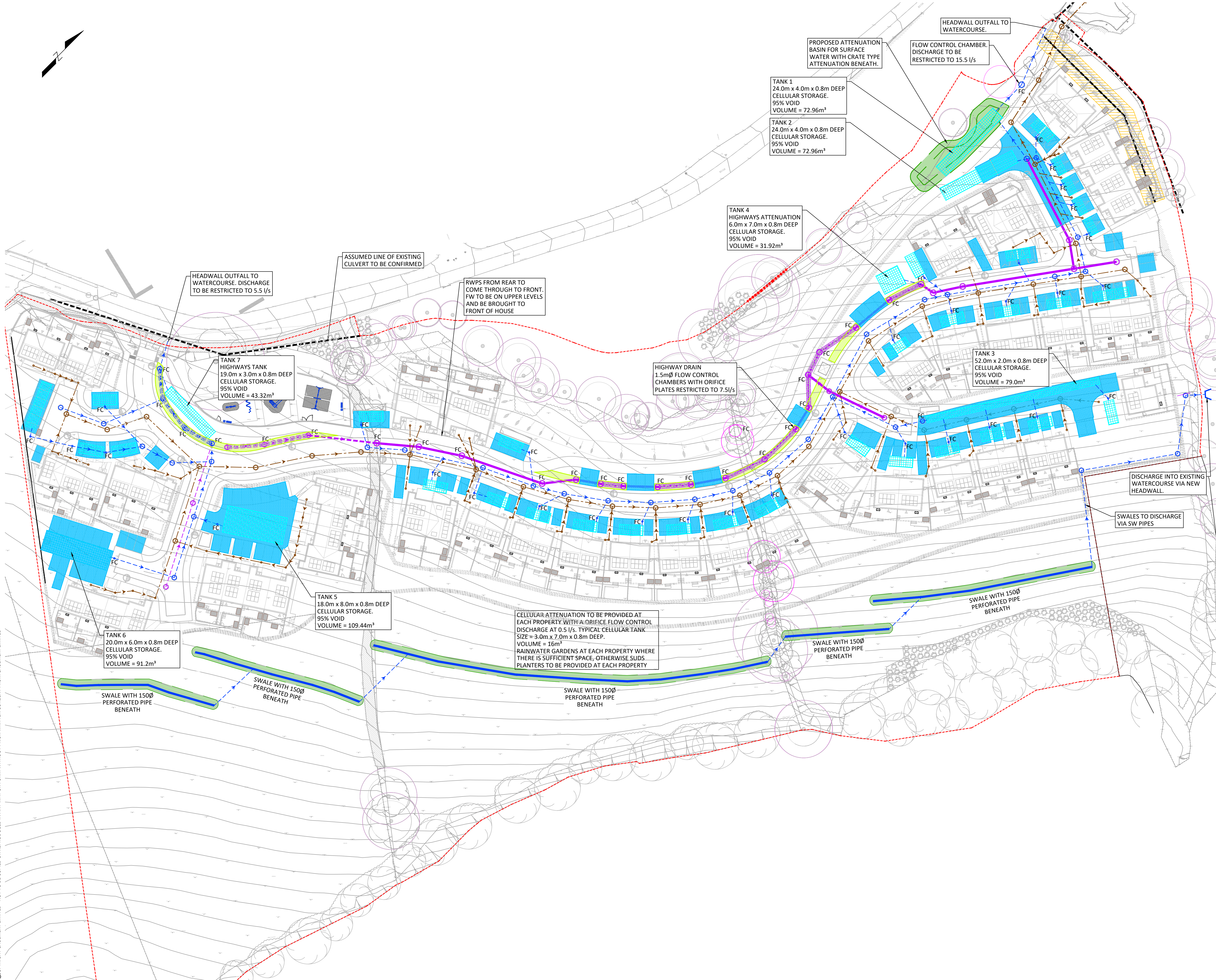


© COPYRIGHT CAULMERT LIMITED - NOT TO BE COPIED OR REPRODUCED IN ANY WAY OR FORM WITHOUT PRIOR WRITTEN CONSENT FROM CAULMERT LIMITED



NOTES

- DO NOT SCALE FROM THIS DRAWING. WORK FROM FIGURED DIMENSIONS ONLY. ALL DIMENSIONS ARE IN METRES AND ALL LEVELS ARE IN METRES ABOVE ORDNANCE DATUM UNLESS NOTED OTHERWISE.
- THIS DRAWING IS TO BE READ IN CONJUNCTION WITH ALL RELEVANT ARCHITECTS, ENGINEERS AND SPECIALIST DRAWINGS AND SPECIFICATIONS.
- TREE ROOT PROTECTION AREAS TAKEN FROM DRAWING 23_5837_05_13 PREPARED BY ROAVR GROUP.
- STORAGE TO BE PROVIDED BELOW PERMEABLE PARKING IN 300mm DEEP SUB-BASE. DISCHARGE FROM PARKING BAYS TO BE RESTRICTED TO 0.5 l/s.
- SAB AND DCWW TO BE CONSULTED REGARDING THE PRINCIPLES INDICATED ON THE DRAWING.

LEGEND

- EXISTING SURFACE WATER SEWER
- EXISTING CULVERT
- ASSUMED EASEMENT
- EXISTING FOUL WATER SEWER
- PROPOSED SURFACE WATER PIPE
- PROPOSED PCC SURFACE WATER CHAMBER
- FC FLOW CONTROL CHAMBER
- PROPOSED PPIC SURFACE WATER CHAMBER
- PROPOSED HIGHWAY SURFACE WATER PIPE
- PROPOSED HIGHWAY SURFACE WATER FILTRATION TRENCH WITH PERFORATED PIPE
- PROPOSED HIGHWAYS PCC SURFACE WATER CHAMBER
- FC PROPOSED HIGHWAYS FLOW CONTROL CHAMBER
- PROPOSED FOUL WATER PIPE
- PROPOSED FOUL WATER 1200Ø PCC CHAMBER
- PROPOSED PPIC FOUL WATER CHAMBER
- PROPOSED SURFACE WATER SWALE WITH PERFORATED PIPE BENEATH
- PROPOSED ATTENUATION BASIN
- PROPOSED LINED ATTENUATION
- PROPOSED PERMEABLE PARKING BAYS (NON INFILTRATION)
- TREE ROOT PROTECTION AREA
- PROPOSED HIGHWAYS BIORETENTION AREAS

P04	BIORETENTION HIGHWAYS AREAS ADDED. NOTES REMOVED.	JE	JES	JES	17.12.2
P03	DRAINAGE UPDATED TO SUIT CALCULATIONS AND COMMENTS	JE	JES	JES	10.12.2
P02	DRAINAGE UPDATED TO SUIT CURRENT SITE PLAN AND DESIGN TEAM COMMENTS	JE	JES	JES	27.11.2
P01	ISSUED FOR INFORMATION	CR	JES	JES	21.07.2
REV	MODIFICATIONS	BY	RE	AP	DATE
PURPOSE OF ISSUE				STATUS	
FOR INFORMATION				S2	
CLIENT:					
<div>Adra</div>					
PROJECT:					
LLANRWST ROAD, GYFFIN					
TITLE:					
PROPOSED DRAINAGE					
DESIGNED BY	DRAWN BY	REVIEWED BY	AUTHORISED BY		
CR	CR	JES	JES		
DATE	SCALE @ A1	JOB REF:	REVISION		
JULY 2023	1:500	5388	P04		
DRAWING NUMBER					
5388-CAU-XX-XX-DR-C-1601					
<div><div>Caulmert</div><div>engineering environmental planning</div></div>					