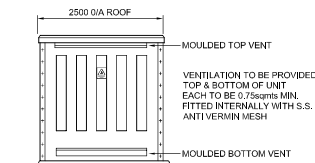
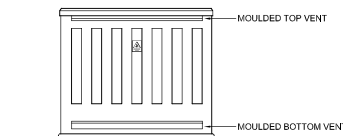


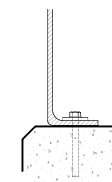
FRONT ELEVATION



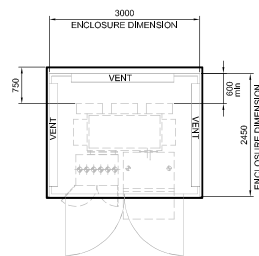
SIDE ELEVATION  
OPPOSITE SIDE IDENTICAL



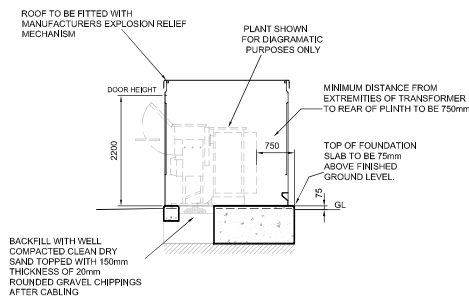
REAR ELEVATION



TYPICAL HOLDING DOWN DETAIL

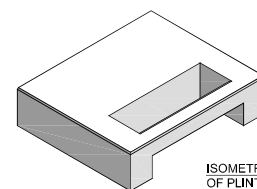


PLANT LAYOUT PLAN



PLANT SECTION

ENCLOSURE ONLY SUITABLE WHEN  
ERECTED AT A DISTANCE OF ONE  
METRE OR GREATER FROM BOUNDARY



ISOMETRIC VIEW  
OF PLINTH

## NOTES

CONCRETE  
THE CONCRETE TO BE IN ACCORDANCE WITH THE SPECIFICATION  
AND ATTAIN THE RELEVANT CUBE CRUSHING STRENGTH AT 28 DAYS.

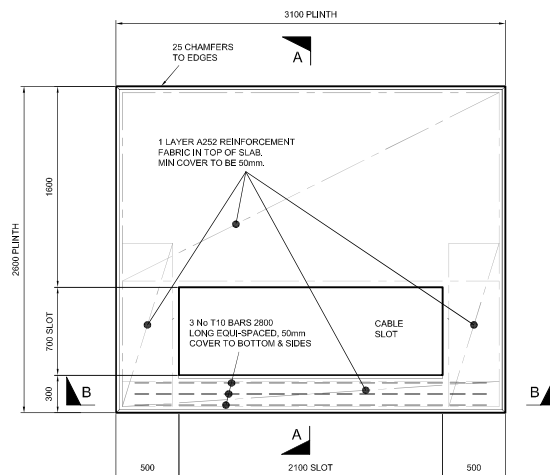
EARTHWORKS  
PLINTH TO BE SET ON UNDISTURBED INORGANIC STRATA  
THAT PROVIDE THE REQUIRED MINIMUM DESIGN SAFE  
GROUND BEARING CAPACITY.

PLINTH (CONCRETE 40N/mm<sup>2</sup> 28 DAY CUBE STRENGTH)  
A FLAT, LEVEL AND SMOOTH FLOOR SURFACE IS ESSENTIAL  
FOR INSTALLATION OF PLANT. TOLERANCE TO FINISHED  
LEVEL EXPRESSED AS A MAXIMUM PERMISSIBLE DEVIATION  
BENEATH A STRAIGHT EDGE WITH FEET PLACED ANYWHERE  
ON THE FLOOR SHALL NOT EXCEED 1mm IN 1M OR 3mm IN 3M.

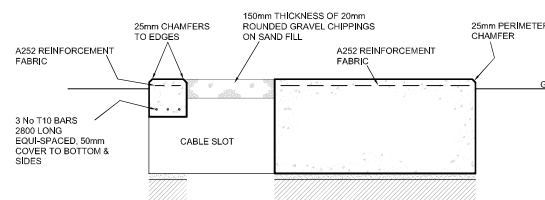
CABLE SLOT  
ON COMPLETION OF CABLEING, CABLE AREA TO BE  
FILLED WITH DRY SAND AND TOPPED WITH  
150mm DEPTH OF 20mm ROUNDED GRAVEL CHIPPINGS

FOUNDATION & FLOOR LAYOUT DETAIL AS INDICATED ARE TYPICAL  
FOR UNIT SUBSTATIONS HOUSING OUTDOOR EQUIPMENT  
AND WOULD NOT THEREFORE BE APPLICABLE TO OTHER  
SUBSTATION TYPES.

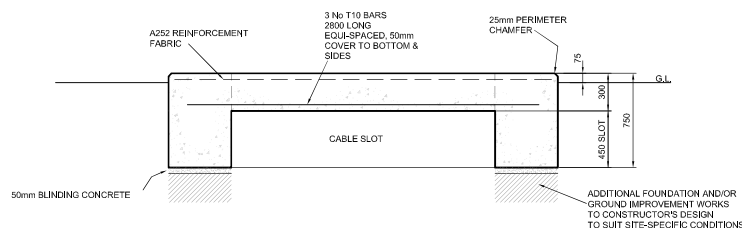
THIS DRAWING TO BE READ IN CONJUNCTION WITH  
SUB-03-017 'GENERAL SPECIFICATION FOR THE  
CIVIL ENGINEERING AND BUILDING DESIGN AND  
CONSTRUCTION OF SECONDARY SUBSTATIONS'




FOUNDATION PLAN  
SCALE 1:20



SECTION A - A  
SCALE 1:20



SECTION B - B  
SCALE 1:20

Rev.	5.0	Date	MAR.2010	UPDATED
Drawn	M.T.	Checked	C.W.	Approved
Approved	A.J.R.			
 <h1>SP ENERGY NETWORKS</h1> <p>SP PowerSystems Ltd System Design, Drawing Office 3 Prenton Way, Prenton, CH43 3ET Telephone 0151 6092491</p>				
<b>Title</b> <b>TYPICAL FOUNDATION PLINTH FOR 11kV UNIT SUBSTATION</b> <b>WITH 3.0 X 2.45M GRP ENCLOSURE</b>				
<b>Location</b> <b>TYPICAL</b>				
Drawn	Date	Checked	Date	Approved
T.C.	27/3/06	H.R.B.	27/3/06	C.W.
Status	Drg. No.		Rev.	
FOR ISSUE	SP2022244		5.0	
© Copyright property of SP PowerSystems Ltd.		Scale	Size	
		1:50	A1	